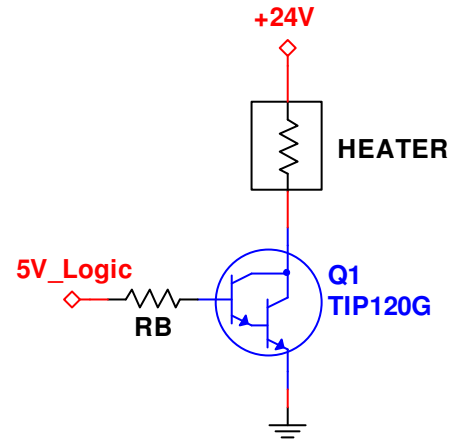


## 2 problems for 20 pts

## Problem 1: BJT Switch

A microcontroller with 5V logic output operates a Darlington switch for a heating element (i.e. a resistor) rated at 24V @ 50W.

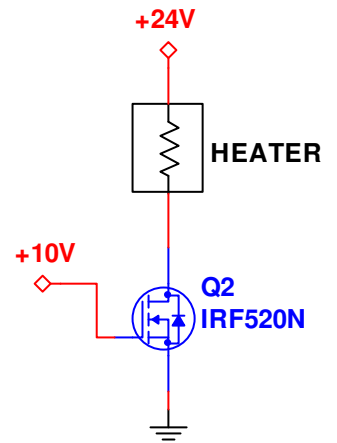
- Choose the appropriate 5% value for  $R_B$  under typical Q1 conditions.
- Assuming worst-case Q1 conditions, would a 15 °C/W heat sink be adequate for Q1?



## Problem 2: MOSFET Switch

Consider a power MOSFET for the same type of heating element (rated at 24V @ 50W). The control comes from a logic level shifter producing 0 to 10V logic.

- Compute the load voltage and load power dissipation under typical Q1 conditions.
- Assuming worst-case Q2 conditions, does Q2 need a heat sink?



Standard Resistor Values ( $\pm 5\%$ )						
1.0	10	100	1.0K	10K	100K	1.0M
1.1	11	110	1.1K	11K	110K	1.1M
1.2	12	120	1.2K	12K	120K	1.2M
1.3	13	130	1.3K	13K	130K	1.3M
1.5	15	150	1.5K	15K	150K	1.5M
1.6	16	160	1.6K	16K	160K	1.6M
1.8	18	180	1.8K	18K	180K	1.8M
2.0	20	200	2.0K	20K	200K	2.0M
2.2	22	220	2.2K	22K	220K	2.2M
2.4	24	240	2.4K	24K	240K	2.4M
2.7	27	270	2.7K	27K	270K	2.7M
3.0	30	300	3.0K	30K	300K	3.0M
3.3	33	330	3.3K	33K	330K	3.3M
3.6	36	360	3.6K	36K	360K	3.6M
3.9	39	390	3.9K	39K	390K	3.9M
4.3	43	430	4.3K	43K	430K	4.3M
4.7	47	470	4.7K	47K	470K	4.7M
5.1	51	510	5.1K	51K	510K	5.1M
5.6	56	560	5.6K	56K	560K	5.6M
6.2	62	620	6.2K	62K	620K	6.2M
6.8	68	680	6.8K	68K	680K	6.8M
7.5	75	750	7.5K	75K	750K	7.5M
8.2	82	820	8.2K	82K	820K	8.2M
9.1	91	910	9.1K	91K	910K	9.1M