

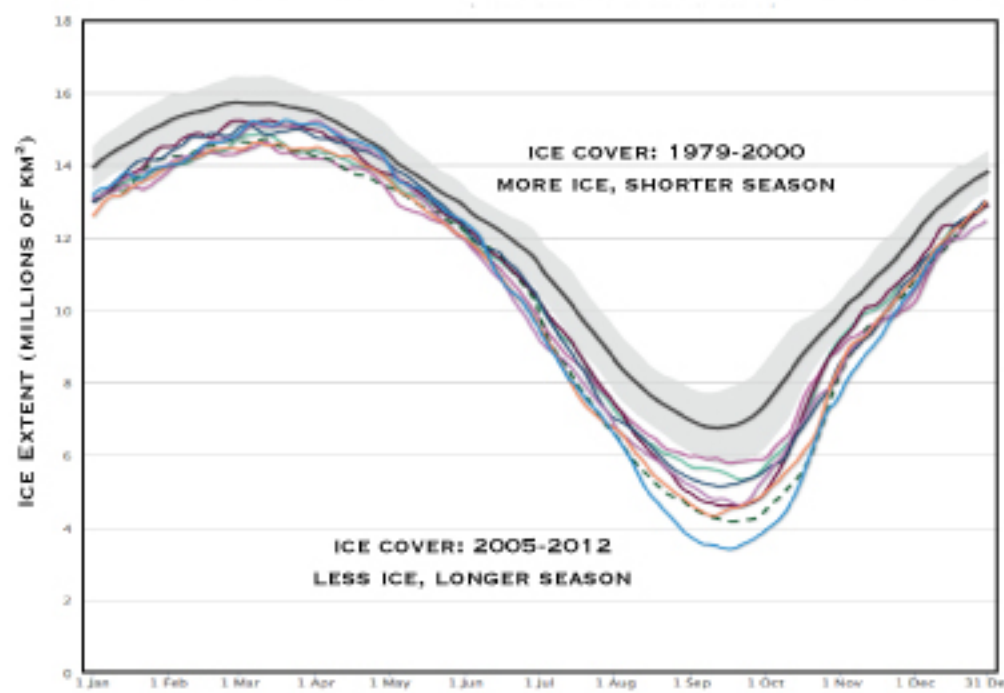
# A CHANGING FLIGHT SCHEDULE FOR DUCKS AND GEESE IN THE MOHAWK WATERSHED

eBIRD OBSERVATIONS: WHEN BIRDS ARE SEEN IN THE LOWER MOHAWK



DISTRIBUTION OF THE SNOW GOOSE (CHEN CAERULESCEN)

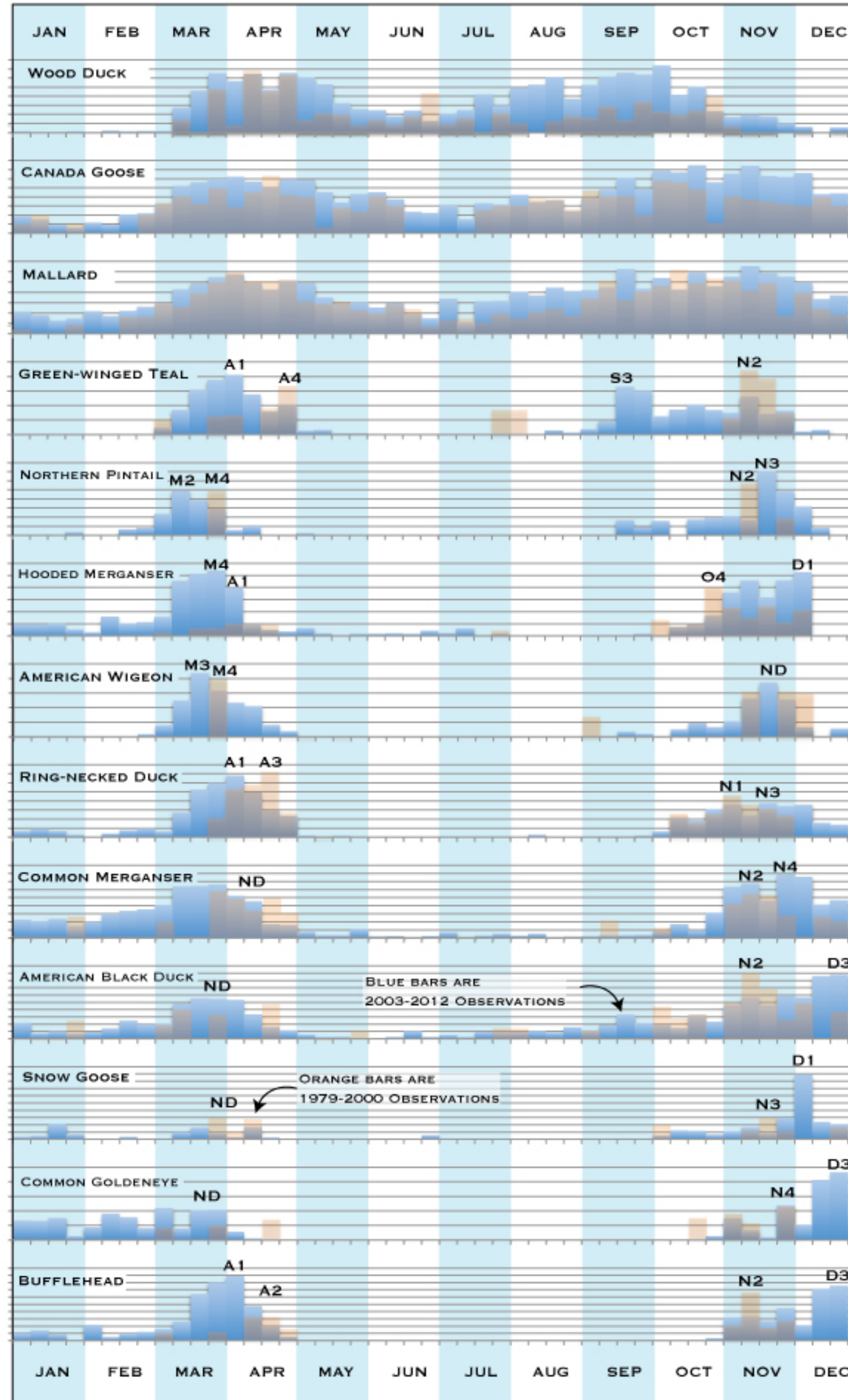
EXTENT OF ARCTIC SEA ICE: A LONGER SEASON FOR WATERFOWL



WATERFOWL ARE EXTENDING THEIR TIME UP NORTH DUE TO LONGER ICE-FREE CONDITIONS. GRAPH SHOWS THE EXTENT OF ARCTIC SEA ICE. FOR THIS RECORD, 2003, 2004 ARE NOT SHOWN (THEY OVERLAP 1979-2000 ENVELOPE). LINES SHOWN ARE 2005 TO 2012. THE LOWEST LINE (BLUE) IS 2012, AND THIS IS THE LOWEST EXTENT OF ICE OF THIS RECORD. FROM NATIONAL SNOW AND ICE DATA CENTER (12/12).

ARRIVALS  
(FROM SOUTH)

DEPARTURES  
(FROM NORTH)



SEASON EXTENSION FOR NON-RESIDENTS  
(INCREASE IN LAST DECADE)

-4WK

+3 WK

+6 WK

+1 WK

+2 WK

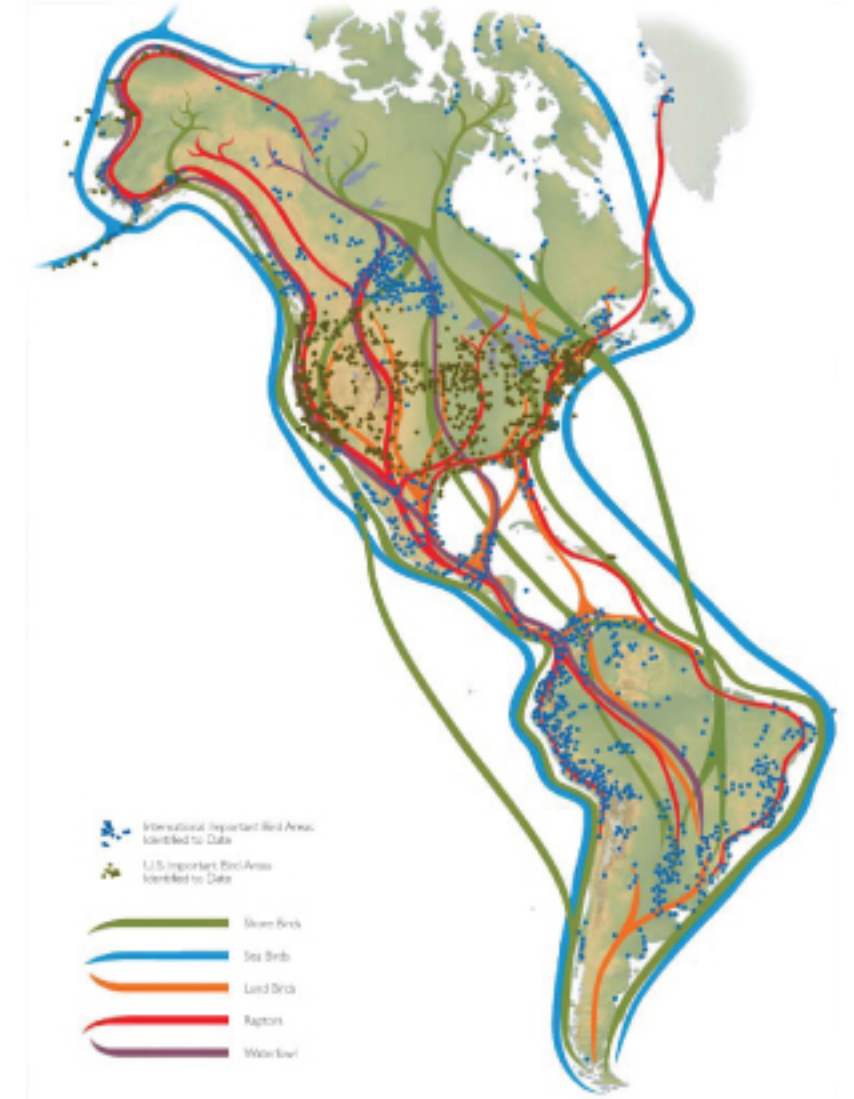
+2 WK

+5 WK

+2 WK

+3 WK

+6 WK



SNOW GOOSE (CHEN CAERULESCEN)



BUFFLEHEAD (BUCEPHALA ALBEOLA)

THESE DATA SUGGEST THAT IN THE LAST DECADE, NON-RESIDENT WATERFOWL ARE EXTENDING THEIR SEASON UP NORTH, PROBABLY DUE TO LONGER ICE-FREE CONDITIONS IN THE LATE SEASON. DATA PLOTTED HERE ARE FROM eBIRD, THE LARGEST DATABASE ON BIRD OBSERVATIONS IN THE U.S., AND THE SIZE OF EACH HISTOGRAM BAR IS RELATIVE TO NUMBER OF SITINGS (DIFFERENT IN EACH CASE). OBSERVATIONS PLOTTED ARE FOR SCHENECTADY, SARATOGA, AND SCHOHARIE COUNTIES FOR TWO TIME WINDOWS: 1) 2003-2012 (BLUE) AND 2) 1979-2000 (ORANGE). DATA DOWNLOADED 12/12. DATA ARE GIVEN IN MONTHLY QUANTILES, AND PEAK OCCURRENCE IS DENOTED WHERE ESTIMATED (E.G. N2, D3 IS THE SECOND WEEK IN NOVEMBER AND THE THIRD WEEK IN DECEMBER. ND INDICATES NO APPARENT DIFFERENCE).

POSTER COMPILED BY J.J. GARVER, GEOLOGY DEPARTMENT, UNION COLLEGE. AMERICA FLYWAYS MAP COPYRIGHT BY THE AUDUBON SOCIETY. DATA FROM eBIRD. BUFFLEHEAD AND SNOW GEESE (AND DISTRIBUTION) CREATIVE COMMONS COPYRIGHT RELEASE.