

WHAT THE CAMPERS ATE
(Camp Menus For One Week)

SUNDAY

Breakfast

Blended Juice
Bacon
Eggs
Toast
Milk

Lunch

Fried Chicken
Green Beans
Potatoes
Slaw
Bread
Cake
Tea

Dinner

Cold Cuts
Potato Chips
Carrots
Fruit Beverage
Oranges
Cookies
Candy Bars

MONDAY

Tomato Juice
Oatmeal
Fried Apples
Toast
Apple Jelly
Milk

Pork Sausage
Peas
Carrots
Hominy
Applesauce
Bread
Pudding
Tea

Hamburgers
Navy Beans
Corn
Rice
Combination Salad
Bread
Cake
Milk

TUESDAY

Grapefruit Juice
Corn Flakes
Eggs
Grape Jelly
Toast
Milk

Cheese
Lima Beans
Kale
Beets
Bread
Fruit Cocktail
Tea

Ham
Sweet Potatoes
Spinach
Celery and Carrots
Bread
Cake
Milk

WEDNESDAY

Tomato Juice
Pan Cakes
Cereal
Syrup and Butter
Milk

Spaghetti
Peas
Corn
Tomatoes
Bread
Plums and Cookies
Tea

Roast Beef
Green Beans
Potatoes
Slaw
Bread
Cake
Milk

THURSDAY

Blended Juice
Eggs
Rolls
Apple Jelly
Toast
Milk

Bologna
Spinach
Navy Beans
Salad
Bread
Pears
Tea

Pork Chops
Peas
Potatoes
Carrots and Celery
Bread
Cherry Pie
Milk

FRIDAY

Tomato Juice
French Toast
Syrup and Butter
Milk

Fish
Peas
Rice
Slaw
Bread
Apricots and Cookies
Tea

Meat Loaf
Potato Salad
Carrot Strips
Apples
Cookies
Fruit Beverage

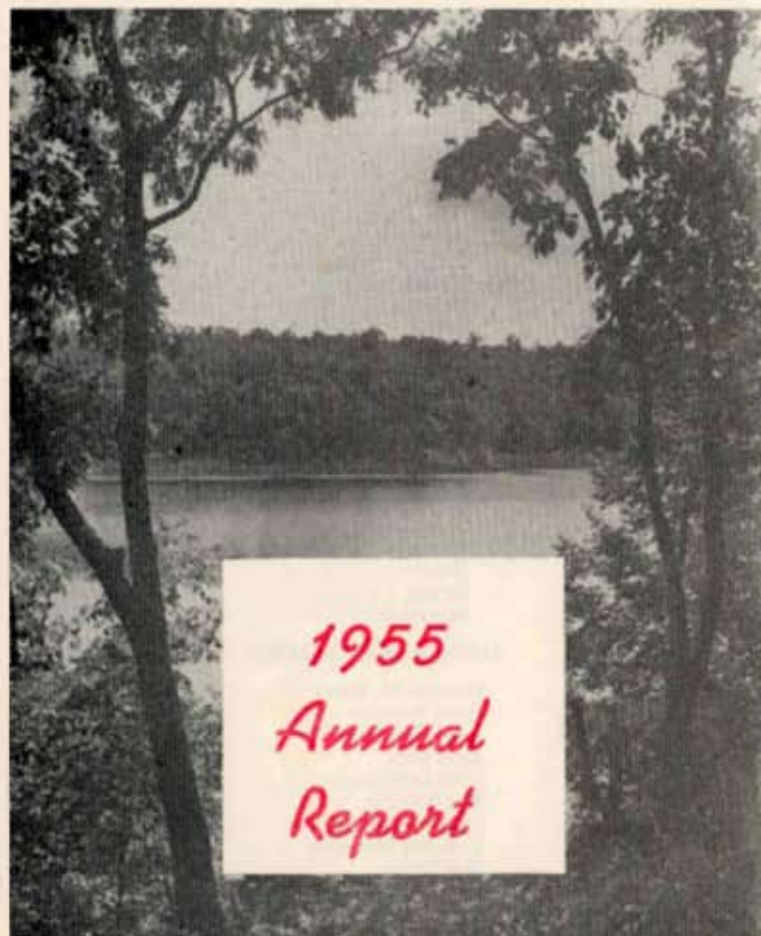
SATURDAY

Grapefruit Sections
Oatmeal
Eggs
Toast
Marmalade
Milk

Chili
Slaw
Crackers
Cake
Tea

Veal Chops
Potatoes
Peas
Tomatoes
Apple Cobbler
Milk

**CAMP
WAWAYANDA**



1955
*Annual
Report*

CAMP WAWAYANDA STAFF

Director.....	Earl P. Armstrong
Associate Director.....	Walter Scott
Secretary & Business Manager.....	Tom Matthews
"Trail Blazer" Director.....	Robert E. Grant
Aquatics Director.....	William H. Strain
Pioneering Director.....	James M. Wait
Craft Director.....	Wendell F. Rasco
Dietician.....	Clara Spanyer
Nurse.....	Phyllis Ford
Maintenance.....	Edward Ackerman

COUNSELORS

NAME	COLLEGE OR UNIVERSITY	HOME
John C. Caton	Princeton	Ho-Ho-Kus, N. J.
George F. Davitt	Panzer	Newark, N. J.
George H. Douglas	Lafayette	Glen Ridge, N. J.
Dan Driskell	Howard	Sheffield, Alabama
Richard H. Edell	Drew	Hanover, N. J.
Robert G. Finney	Marietta	Cranford, N. J.
James C. Fisher	Maryville	Milesburg, Pa.
Alfredo A. Gavino	Berkeley Divinity	Currimeo, I.N., Phil.
Peter S. Goodwin	Trinity	Philadelphia, Pa.
Robert Lee Haggard	Howard	Greensboro, Alabama
Kenneth H. L. Hamje	Oberlin	Livingston, N. J.
Robert Neil Hertz	Rutgers	Roselle, N. J.
Christopher C. Jones	Hobart	Madison, N. J.
Thomas Roy King	Howard	Selma, Alabama
William F. McNally	King's	Colonial Beach, Va.
Peter Mangels	Tufts	Ozone Park, N. Y.
Bobby R. Mashburn	Howard	Gadsden, Alabama
Don Neill	Syracuse	Rahway, N. J.
Louis F. Pomrenke, Jr.	Pittsburgh	Pittsburgh, Pa.
Freddie R. Powell	Howard	Beatrice, Alabama
Bruce R. Pullen	Rutgers	Hightstown, N. J.
Chi Soo Pyun	Seton Hall	Seoul, Korea
Hae Soo Pyun	Seton Hall	Seoul, Korea
Helmut F. Ressmeyer	Syracuse and Columbia	Brooklyn, N. Y.
Jack H. Scaff, Jr.	Wooster	Bernardsville, N. J.
Robert G. Slater	Drew	West Caldwell, N. J.
James C. Smith, Jr.	Brown	Ho-Ho-Kus, N. J.
Christopher B. Ward	Maryville	Greenbelt, Maryland

HOSPITAL AID

Arthur C. Lockett

JUNIOR COUNSELORS

Douglas M. Bauer
 Dave Burrison
 Ralph W. Holt
 Kent King
 Fritz Levenbach
 Phil Merikle
 Charles Merkel
 Brendon Monahan
 Bob Smith
 Ronald Steneck
 John H. Walker

KITCHEN STAFF

Goldie McPhails
 Juanita Carter
 Rose Hendershot
 Loraine Stewart
 Nellie Bubowich
 Goldie Saunders
 Celia Scott
 Emerson Ironside
 William F. McKim, Jr.
 Kenneth Sohn

1955 ATTENDANCE RECORD

PERIODS	CAMPER	CAMPER WEEKS	STAFF	STAFF WEEKS
First	153 + 4*	310	53	106
Second	177 + 7*	361	53	106
Third	182 + 6*	370	53	106
Fourth	178 + 7*	363	53	106

* One week.

411 Different Boys — 1404 Camper Weeks — 53 Different Staff

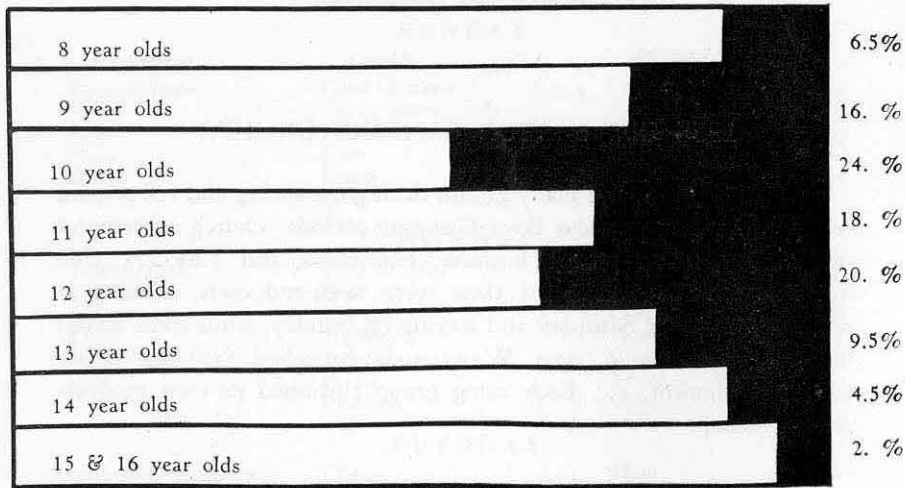
DISTRIBUTION OF CAMPERS ACCORDING TO CITIES

CITY	CAMPER		CITY	CAMPER	
	CAMPERS	WEEKS		CAMPERS	WEEKS
Bergen County	14	39	Plainfield	37	114
Elizabeth	31	101	Rahway	6	20
Hunterdon County	2	6	Ridgewood	42	127
Jersey City	6	30	Somerset Hills	2	4
Jersey City	6	30	(Bernardsville)		
Madison	4	14	Summit	26	104
Mercer County	4	10	Westfield	76	267
Montclair	64	201	Misc. In Area	62	237
New Brunswick	2	4	Misc. Out of Area	27	98
Perth Amboy	6	28			

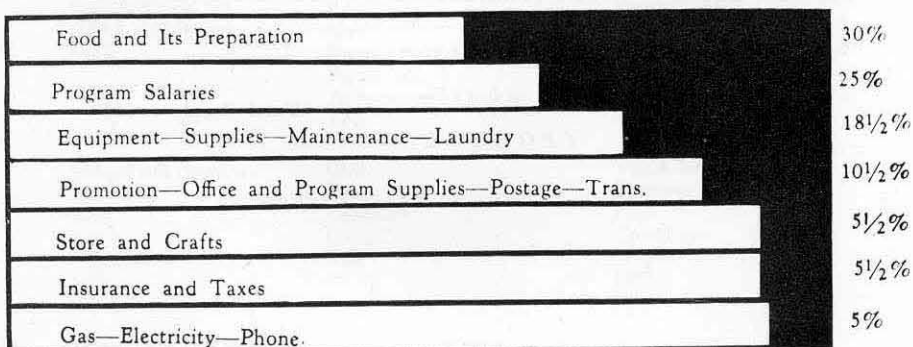
HOW THE CAMPER SPENT HIS DAY

Week Days		Sundays	
7:30	Reveille	8:00	Reveille
7:45	Morning Worship	8:15	Flag Raising
8:05	Flag Raising	8:30	Breakfast
8:20	Breakfast	9:10	Work Detail
9:00	Work Detail	10:20	General Swim
9:50	1st Hobby Period	11:30	Chapel
10:50	2nd Hobby Period	12:45	Recall
11:50	Recall	1:00	Lunch
12:30	Lunch	1:45	Rest Period
1:15	Rest Period	3:00	Cabin Activities—Hikes, Games, etc.
2:45	3rd Hobby Period	4:30	General Swim
4:00	General Swim	5:05	Recall
4:40	Recall	5:30	Assemble in Villages
5:20	Flag Lowering	5:40	8:30 Picnic Supper in Villages
5:30	Supper		Village Program
6:55	Competitive Games		Village Vespers
7:50	Evening Program	8:45	Call To Quarters
8:45	Call To Quarters— Evening Vespers	9:00	Taps
9:00	Taps		

WAWAYANDA CAMPERS BY AGES



HOW THE WAWAYANDA DOLLAR WAS SPENT



CAMP WAWAYANDA ACTIVITIES

ATHLETICS

Baseball
Softball
Basketball
Volleyball
Track
Tennis
Swimming
Diving
Boxing
Paddle Tennis
Badminton

RECREATIONAL

Ping Pong
Checkers
Shuffleboard
Horseshoes
Chess
Boating
Archery
Riflery
Hiking
Exploring
Nature Study
Fishing

HANDICRAFT

Leather Work
Gimp Work
Woodworking
Metal Tapping
Weaving
Whittling
Indian Lore
Nature Craft
Pioneering
Ceramics
Crystal Radio Sets

EDUCATIONAL

Dramatics
Music Appreciation
SPECIAL EVENTS
Swimming Meets
Track Meets
Rifle Matches
Archery Matches
Olympics
Canoe Trips
Cook Outs
Cabin Hikes
Picnics

Chief Sunrise

Capt. Bob Danskin
Conservation Caravan
Red Cross Demonstration
Overnight Hikes
Trip To Fish Hatchery
Trip To High Point
Campers' Day
World Service Day
Paul Bunyan Day
North-South Day
Pioneer Day

WORSHIP PROGRAM

Cabin Devotions
Village Vespers
Chapel Services
All-Camp Vespers
Mass For Catholic Boys

AQUATIC ACTIVITIES

Swimming Advancement Tests
Minnow
Fish
Flying Fish
Shark
Lifesaving
Boating Instructions
Row Boats
Canoes

NEW EQUIPMENT ADDED

- 100 CAMPER HYMNALS
- 4 New Rifles
- Volleyball
- Ping Pong Nets, Paddles and Balls
- Baseballs
- Catcher's Mask
- Body Protector
- Softballs
- 1 Shuffleboard Set
- Electric Floor Scrubber
And Squeegee
- Waterfront Equipment
2 Canoes (18')
- 1 Canoe (15')
- 1 War Canoe (25')
- "Trail Blazer" Equipment
4 Reflector Ovens
2 Drinking Water Tanks
10 Yukon Packs
4 Aluminum Camp Kits
(14 piece)
2 Tents (16' x 16')
- 10 Ground Cloths

OUR NEXT SEASON PLANS

Camp Dates and Rates:

FULL SEASON	June 24th - August 18th	\$260.00
FIRST PERIOD	June 24th - July 21st	\$135.00
SECOND PERIOD	July 22nd - August 18th	\$135.00
First Half	July 22nd - August 4th	\$ 70.00
Second Half	August 5th - August 18th	\$ 70.00

Boys may sign up for two weeks only during the Second Period; however, we feel that a boy receives a much greater benefit from camp if he stays at least one entire period.

“Trailblazers” (Boys 13 years and up):

FULL SEASON	June 24th - August 18th	\$340.00
FIRST PERIOD	June 24th - July 21st	\$175.00
SECOND PERIOD	July 22nd - August 18th	\$175.00

As a camper of last season, you have first choice of signing up.



CAMP WAWAYANDA

is operated by

THE CENTRAL ATLANTIC AREA COUNCIL OF Y.M.C.A.'s

Serving the States of

Delaware, District of Columbia, Maryland, New Jersey, and Puerto Rico



CAMP COMMITTEE

Raymond A. Bowers, *Chairman*

George S. Cunningham	Robert C. Scott	Jacob Tanis
Henry E. Hird	William E. Speers, Jr.	Herbert P. Wagner
Richard H. Nagel	W. Albert Stirrup	William H. Wells



CAMP ADDRESS

Winter - 45 Bleecker St., Newark 2, N. J.

Telephone: MARKET 3-1441

Summer - Johnsonburg, N. J.

1955 OFF SEASON CAMPING GROUPS

Wawayanda served many groups during the spring and fall seasons before and after its regular Boys' Camping periods—church conferences and retreats, school groups, business conferences, and Y.M.C.A. club and activity groups. Most of these were week-end users, arriving in camp on Friday or Saturday and leaving on Sunday, while some stayed for longer periods of time. Wawayanda furnished facilities, meals, athletic equipment, etc. Each using group furnished its own program and leadership.

Bring your next conference or camping group to Wawayanda. Our facilities are excellent for conferences. Rates vary depending upon the size of the group and may be obtained from the Camp Office upon request.

NAME OF GROUP	NUMBER
Drew University (twice)	200
Drew Seminary	30
Mercer County "Y" Indian Guides.....	75
Summit "Y" Indian Guides.....	50
Metuchen "Y" Indian Guides (twice).....	90
Milltown Gra-Y	15
Bound Brook Congregational Church.....	25
National Y.M.C.A. Foreign Student Committee.....	75
Passaic Men's Club.....	20
Area Industrial Conference	50
Engineering Camp (4 weeks).....	250
Westfield "Y" Board	40
Basking Ridge Presbyterian Church.....	50
Methodist Laymen of Newark Conference.....	100
Area Hi-Y, Tri-Hi-Y Conference.....	175
Warren County Methodist Youth Conference.....	25

Total People 1270