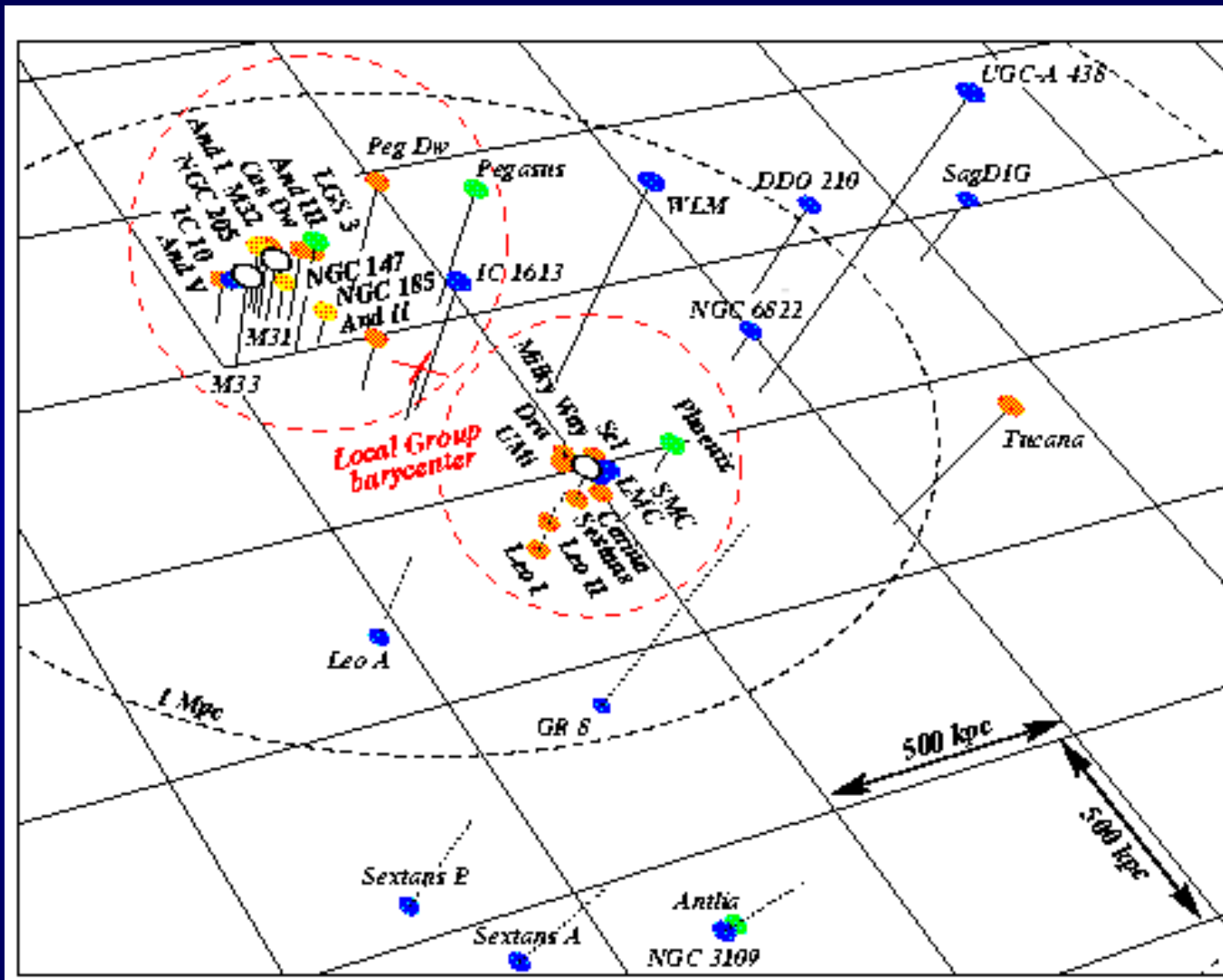


# Local Group Schematic

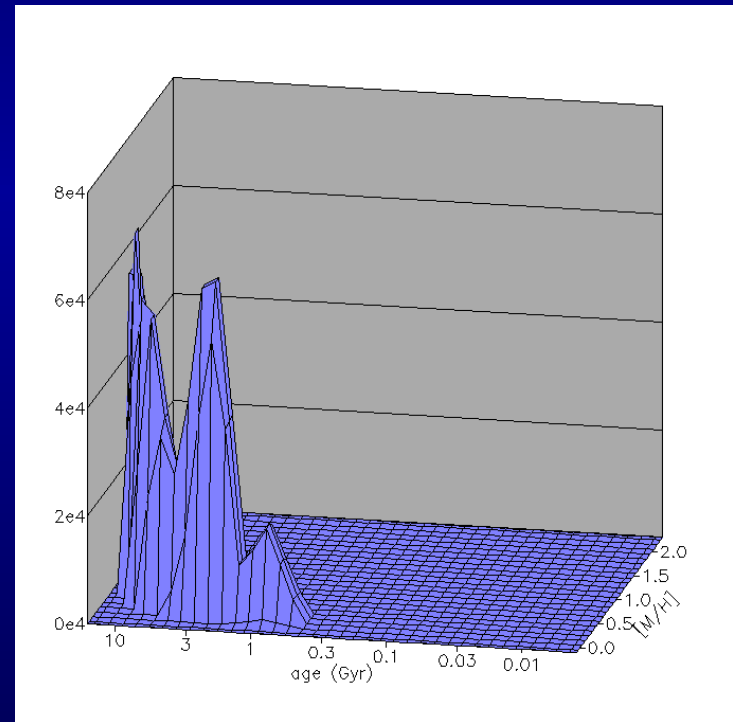


- Giant spirals
- dSph (+dEll)
- dlrr
- dlrr/dSph

*Diagram from Eva Grebel*

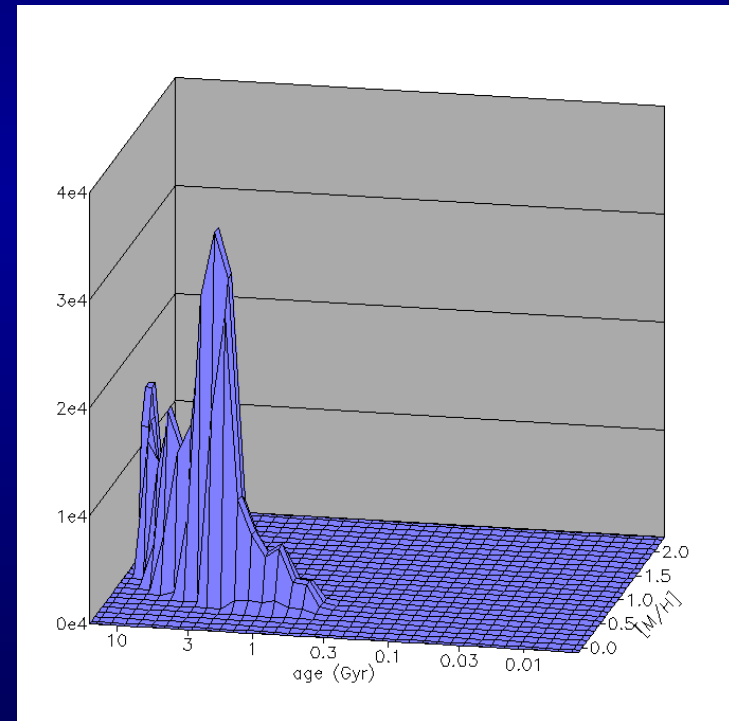
# NGC 205 (E5)

$$M_V = -16.6$$



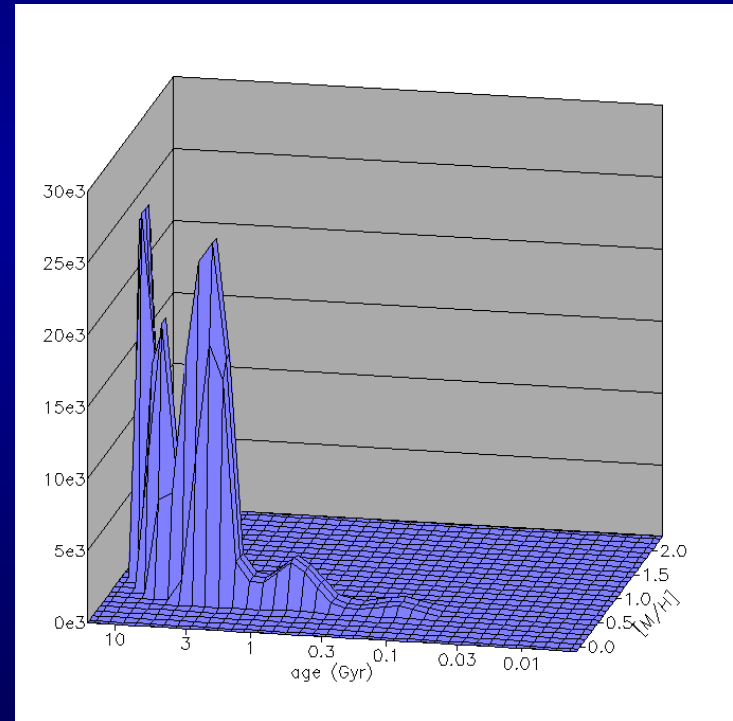
# NGC 147 (dE5)

$$M_V = -15.6$$



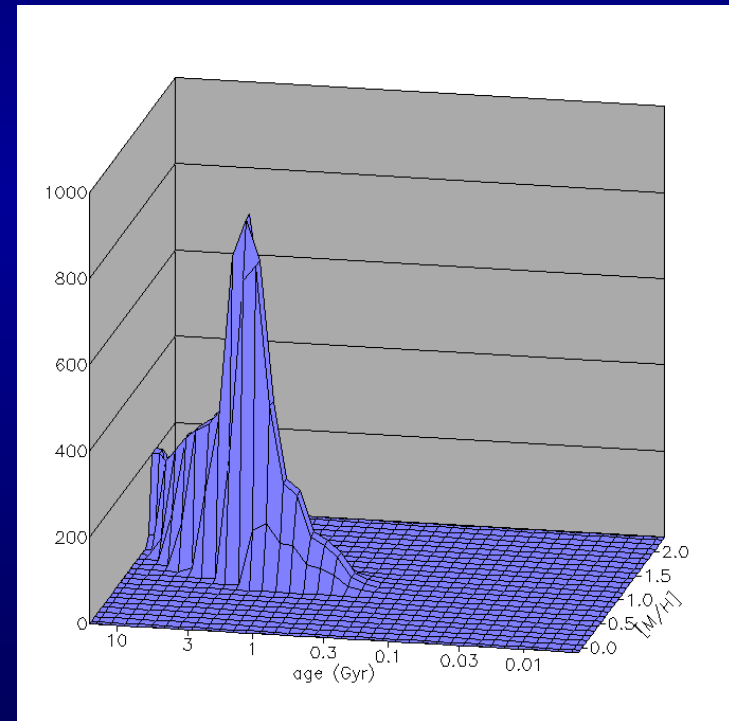
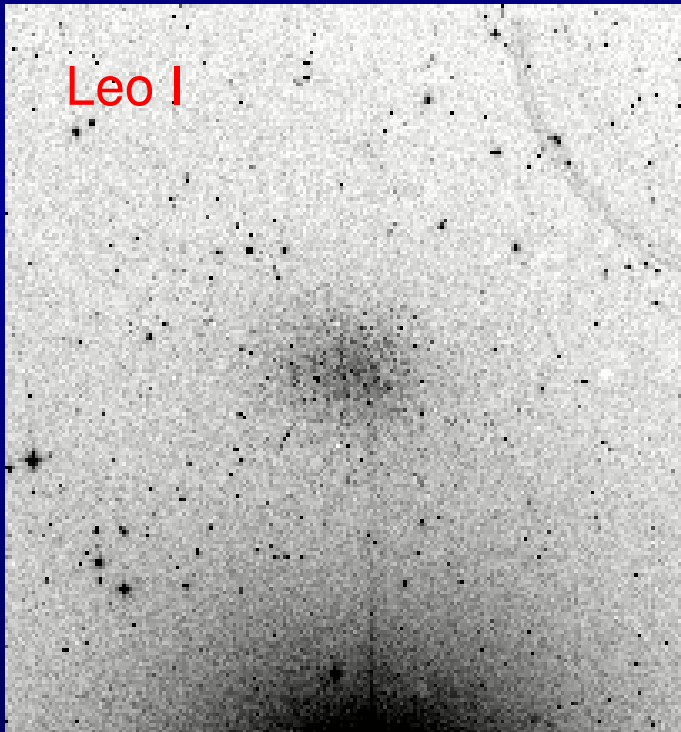
# NGC 185 (dE3)

$$M_V = -15.5$$



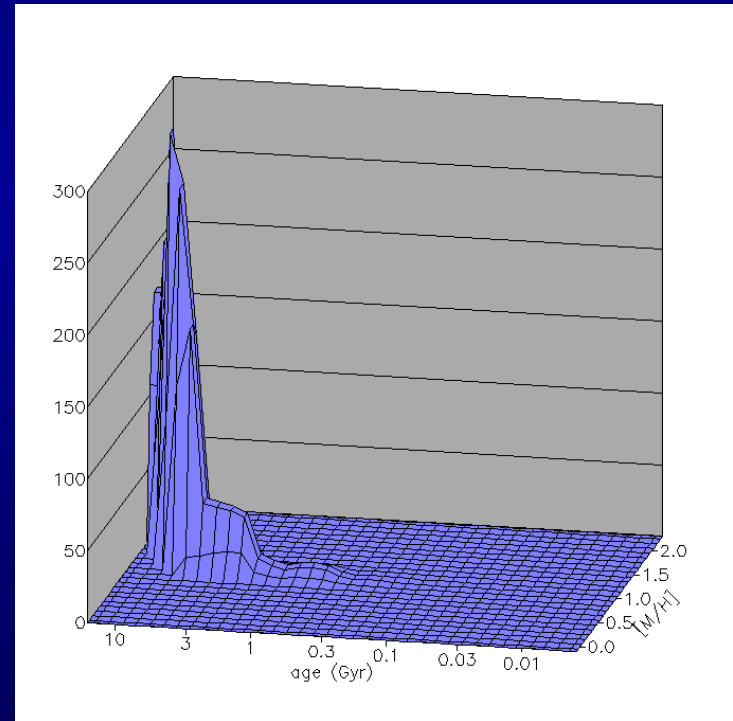
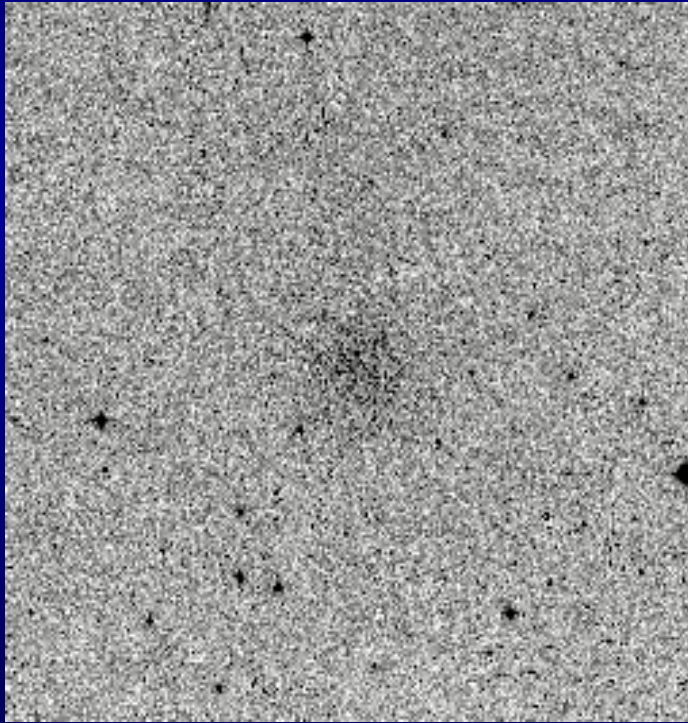
# Leo I (dSph)

$$M_V = -12.0$$



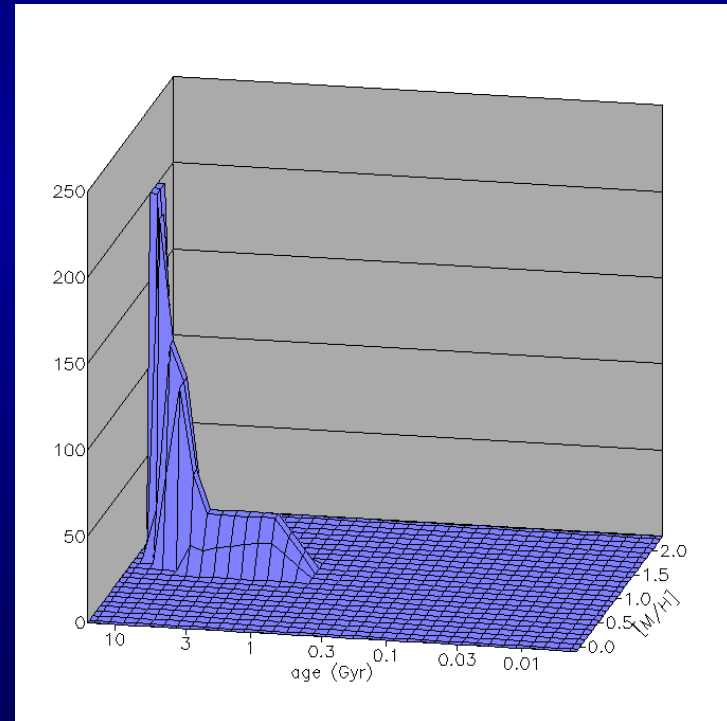
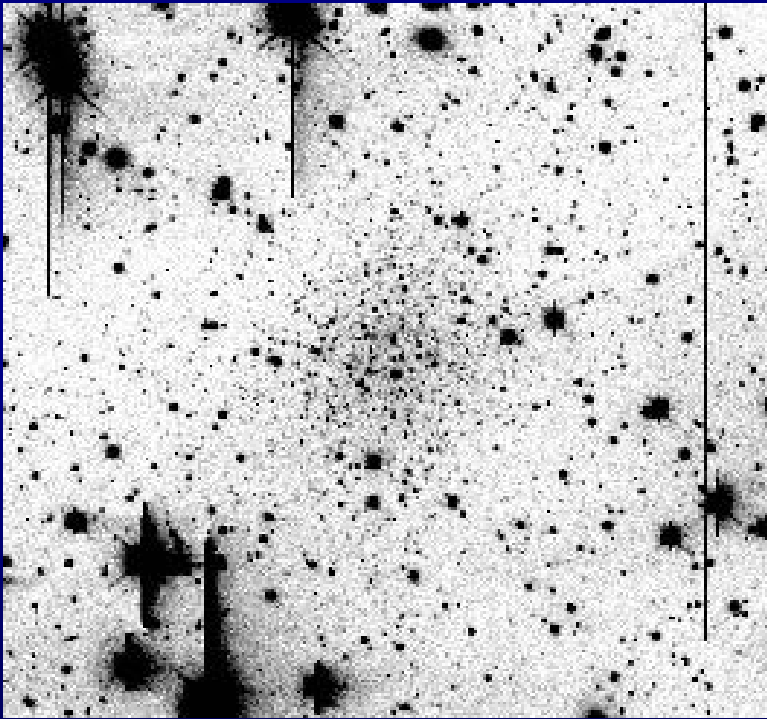
# Leo II (dSph)

$$M_V = -9.6$$



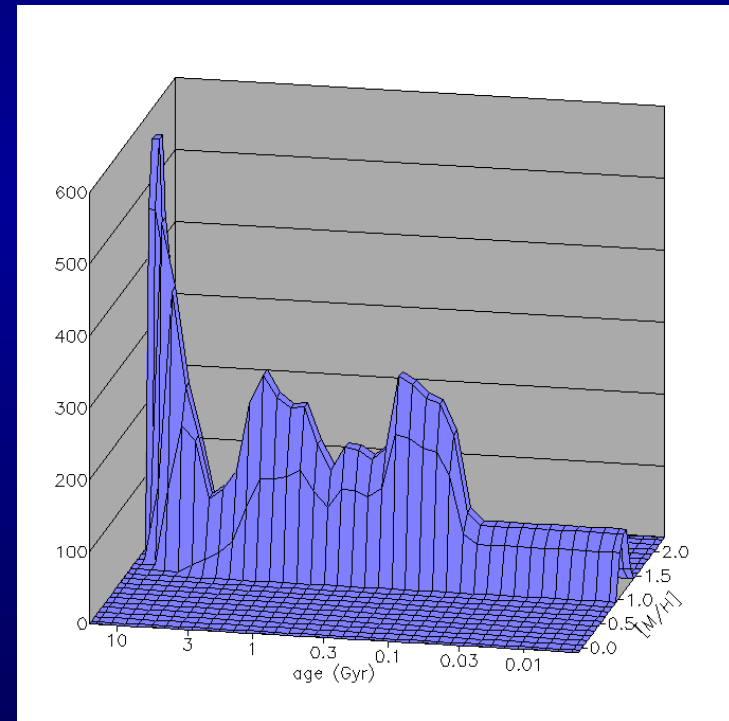
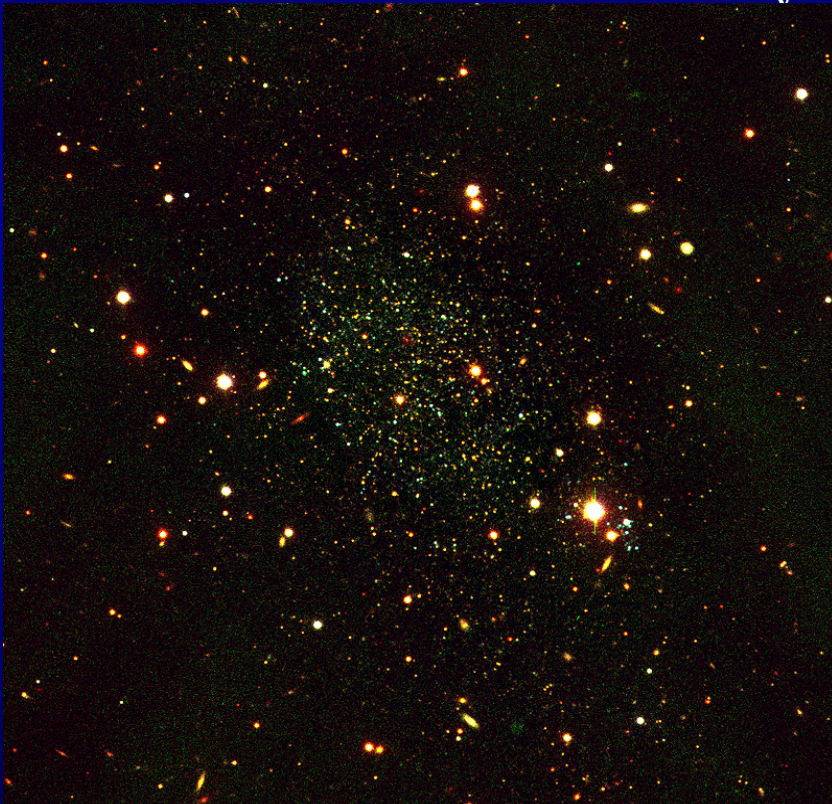
# Andromeda V (dSph)

$$M_V = -9.1$$



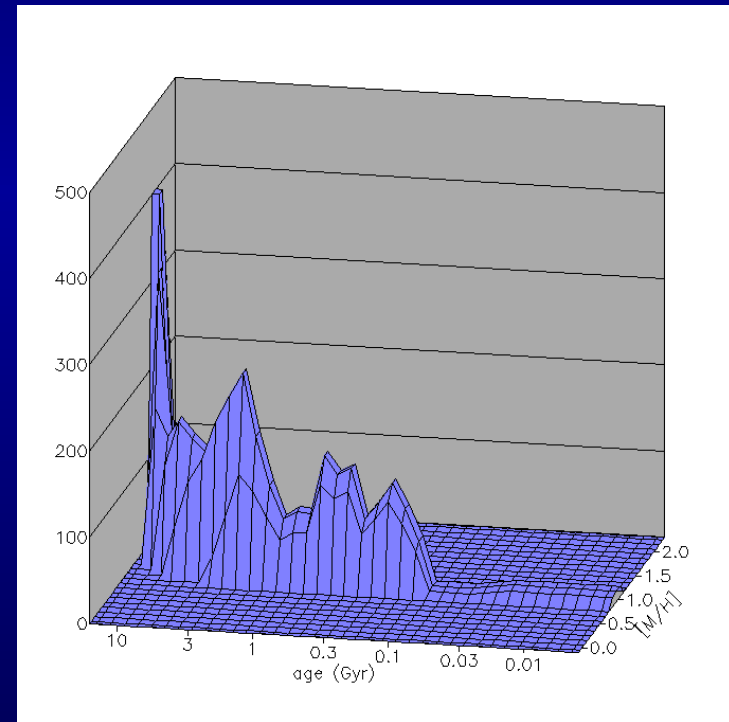
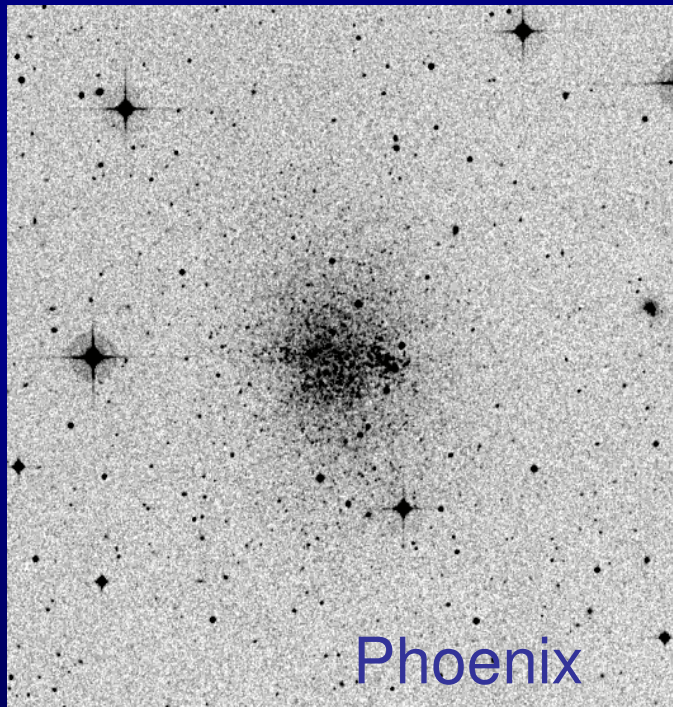
# Antlia (dIrr/dSph)

$$M_V = -11.1$$



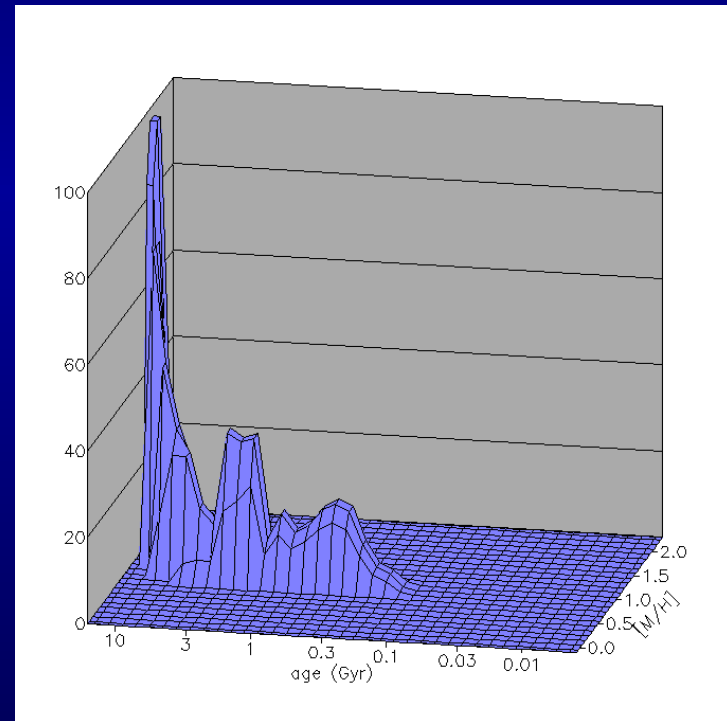
# Phoenix (dIrr/dSph)

$$M_V = -10.0$$



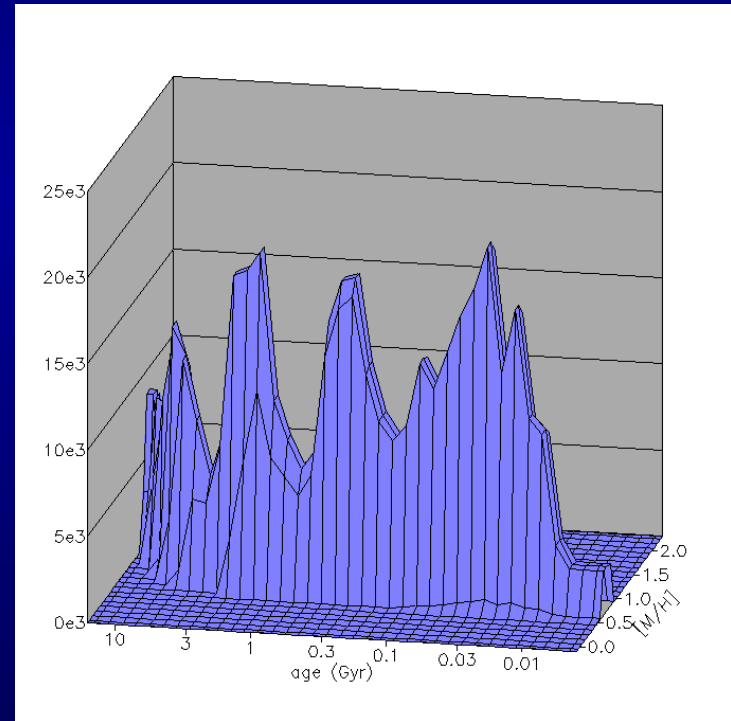
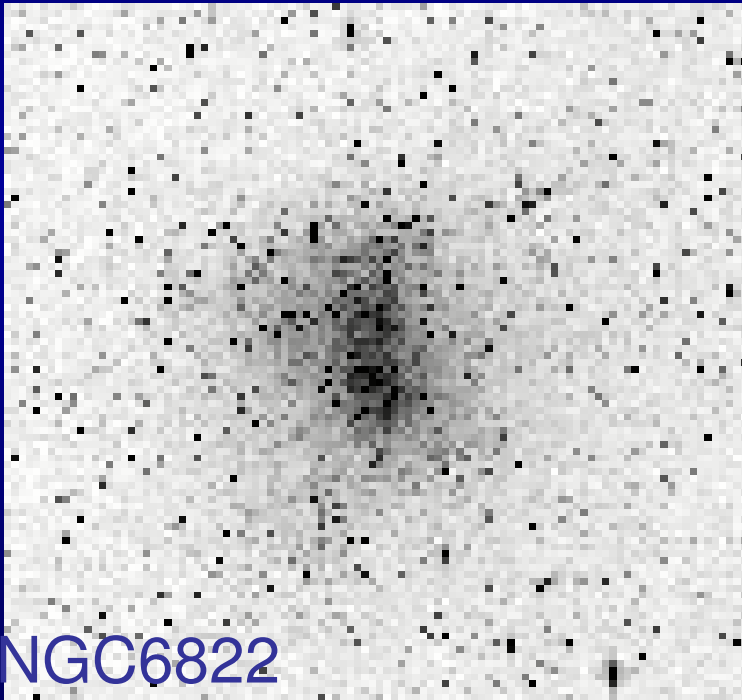
# Pisces=LGS 3 (dIrr/dSph)

$$M_V = -9.8$$



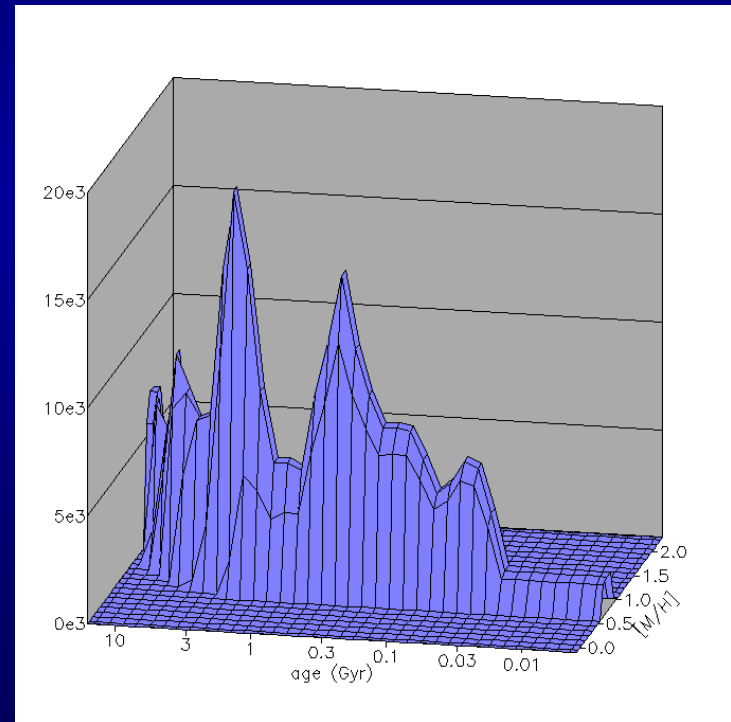
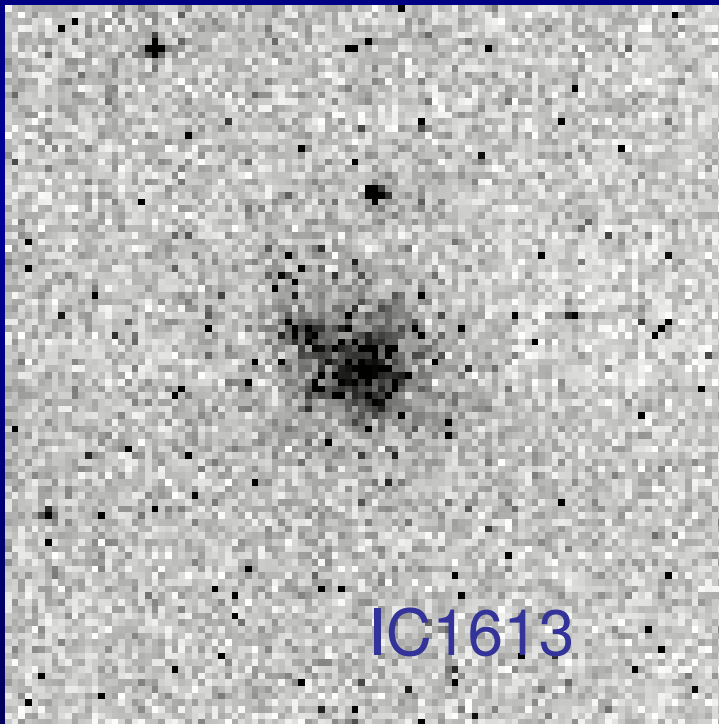
# NGC 6822 (Irr)

$$M_V = -15.0$$



# IC 1613 (Irr)

$$M_V = -14.8$$



# Sextans A (dIrr)

$$M_V = -14.4$$

