

# Physics 111

## Exam #1

September 30, 2022

Name \_\_\_\_\_

Please read and follow these instructions carefully:

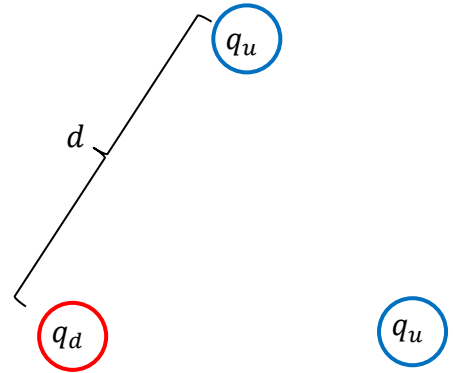
- Read all problems carefully before attempting to solve them.
- Your work must be legible, and the organization clear.
- You must show all work, including correct vector notation.
- You will not receive full credit for correct answers without adequate explanations.
- You will not receive full credit if incorrect work or explanations are mixed in with correct work. So erase or cross out anything you don't want graded.
- Make explanations complete but brief. Do not write a lot of prose.
- Include diagrams.
- Show what goes into a calculation, not just the final number. For example,  
 $|\vec{p}| \approx m|\vec{v}| = (5\text{kg}) \times (2\frac{\text{m}}{\text{s}}) = 10\frac{\text{kg}\cdot\text{m}}{\text{s}}$
- Give standard SI units with your results unless specifically asked for a certain unit.
- Unless specifically asked to derive a result, you may start with the formulas given on the formula sheet including equations corresponding to the fundamental concepts.
- Go for partial credit. If you cannot do some portion of a problem, invent a symbol and/or value for the quantity you can't calculate (explain that you are doing this), and use it to do the rest of the problem.
- Each free-response part is worth 6 points.

Problem #1	/24
Problem #2	/24
Problem #3	/24
Total	/72

*I affirm that I have carried out my academic endeavors with full academic honesty.*

\_\_\_\_\_

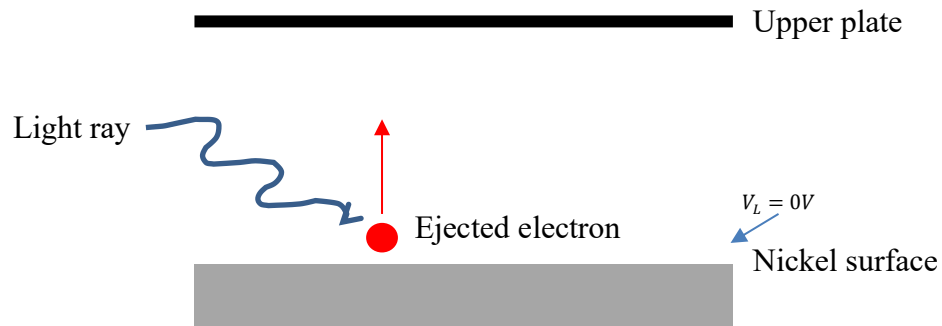
1. When we've done problem involving protons, we've assumed them to be point charges, meaning that they are a point in space with no extent. Protons are not points, but a bound state consisting of three quarks. Suppose that you have two "up" quarks with a charge of  $q_u = +\frac{2}{3}e$  and one "down" quark with charge  $q_d = -\frac{1}{3}e$  located on the vertices of an equilateral triangle. The distance between each charge is  $d = 2.6 \times 10^{-15}m$  as shown on the right.



- a. What is the electrostatic force on the down quark due to the two up quarks? Assume that the quarks are point charges.
- b. What is the net electric field at the down quark's location due to the two up quarks?

- c. What is the value of the electric potential (voltage) at the down quark's location due the two up quarks?
- d. How much work would it take to bring the down quark in from very far away and place it at its current location? Assume that the two up quarks are already at their locations when you bring the down quark in.

2. The photoelectric effect (which we'll talk more about in class later in the term) is a phenomenon in which light incident on a metal surface can eject valence electrons from atoms in the metal surface. To measure the speed of the ejected electrons we use the setup shown below where a charged plate is placed above a metal surface, taken here to be nickel, at a potential of  $V_L = 0V$ . The ejected electron heads toward the charged upper plate, slows down, and if the potential on the upper plate is just right, comes to rest and then returns to the metal surface.

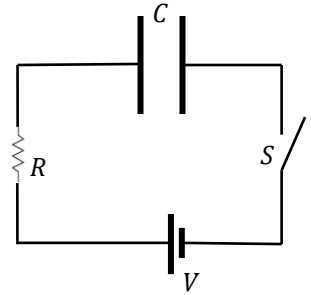


- a. Explain what the sign of the charge on the upper plate is, what the direction of the electric field between the nickel metal surface and the upper plate is, and the potential on the upper plate compared to the lower plate. Be sure to address why your answers are as you state them to earn full credit.

- b. Suppose that the upper plate has a potential of  $|V_u| = 7.28V$  on it. What is the speed of the fastest electron ejected from the nickel surface that can be repelled just before striking the upper plate?
- c. Suppose that the nickel metal surface and the upper charged plate are separated by a distance  $d = 10mm$ . How much charge in magnitude was placed on the upper plate? Assume the upper plate is square with sides of length  $L = 20cm$ .
- d. What is the change in electric potential energy for the ejected electron between the nickel metal surface and when it comes momentarily to rest at the upper plate, in  $eV$ ?

3. A resistor  $R$ , uncharged capacitor  $C$ , and a battery  $V$  are connected to an open switch  $S$  as shown below.

- a. When the switch  $S$  is closed the capacitor begins to charge through the resistor  $R$ . The resistance of the resistor is found to be  $R = 100k\Omega$  and you desire the time constant of the circuit to be  $\tau = 28s$ . What is the capacitance of the capacitor  $C$  that should be wired in the circuit?



- b. Suppose that the resistor was made of tungsten ( $^{181}_{73}W$ ,  $\rho_W = 19280 \frac{kg}{m^3}$ ,  $\rho = 5.6 \times 10^{-8} \Omega m$ ,  $m_W = 181 \frac{g}{mol}$ ) wire with a diameter of  $4mm$ . At the instant the voltage across the capacitor was  $9V$ , what was the drift velocity of the charge carriers in the tungsten wire? Assume that the resistor and capacitor are connected to a  $30V$  battery and that tungsten donates two charge carriers per atom.

- c. Suppose the capacitor was constructed out of two parallel circular metal plates filled with a glass as a dielectric ( $\kappa = 4$ ) separated by a distance  $d = 2\mu\text{m}$ . What was the radius of the circular capacitor plates?

- d. When the capacitor is fully charged the battery is removed. The capacitor is then connected to the resistor and allowed to discharge. At what time will the charge remaining on the capacitor be 15% of the initial charge?

## Physics 111 Formula Sheet

### Electrostatics

$$F = k \frac{q_1 q_2}{r^2}$$

$$\vec{F} = q\vec{E}; \quad E_{pc} = k \frac{q}{r^2}; \quad E_{plate} = \frac{q}{\epsilon_0 A}$$

$$E = -\frac{\Delta V}{\Delta x}$$

$$V = k \frac{q}{r}$$

$$U_e = k \frac{q_1 q_2}{r} = qV$$

$$W = -q\Delta V = -\Delta U_e = \Delta K$$

### Electric Circuits - Capacitors

$$Q = CV; \quad C = \frac{\kappa \epsilon_0 A}{d}$$

$$C_{parallel} = \sum_{i=1}^N C_i$$

$$\frac{1}{C_{series}} = \sum_{i=1}^N \frac{1}{C_i}$$

$$Q_{charging}(t) = Q_{max} \left(1 - e^{-\frac{t}{\tau}}\right)$$

$$Q_{discharging}(t) = Q_{max} e^{-\frac{t}{\tau}}$$

$$I(t) = I_{max} e^{-\frac{t}{\tau}} = \frac{Q_{max}}{\tau} e^{-\frac{t}{\tau}}$$

$$\tau = RC$$

$$U_C = \frac{1}{2}qV = \frac{1}{2}CV^2 = \frac{Q^2}{2C}$$

### Light as a Wave

$$c = f\lambda$$

$$S(t) = \frac{\text{Energy}}{\text{time} \times \text{Area}} = c\epsilon_0 E^2(t) = c \frac{B^2(t)}{\mu_0}$$

$$I = S_{avg} = \frac{1}{2}c\epsilon_0 E_{max}^2 = c \frac{B_{max}^2}{2\mu_0}$$

$$P = \begin{cases} \frac{S}{c}; & \text{absorbed} \\ \frac{2S}{c}; & \text{reflected} \end{cases}$$

$$S = S_0 \cos^2 \theta$$

$$v = \frac{c}{n}$$

$$\theta_{incident} = \theta_{reflected}$$

$$n_1 \sin \theta_1 = n_2 \sin \theta_2$$

$$P = \frac{1}{f} = \frac{1}{d_o} + \frac{1}{d_i}$$

$$M = -\frac{d_i}{d_o}; \quad |M| = \frac{h_i}{h_o}$$

### Magnetism

$$\vec{F} = q\vec{v} \times \vec{B} \rightarrow F = qvB \sin \theta$$

$$\vec{F} = I\vec{L} \times \vec{B} \rightarrow F = ILB \sin \theta$$

$$V_{Hall} = wv_d B$$

$$B = \frac{\mu_0 I}{2\pi r}$$

$$\mathcal{E} = \Delta V = -N \frac{\Delta \Phi_B}{\Delta t}$$

$$\Phi_B = BA \cos \theta$$

### Electric Circuits - Resistors

$$I = \frac{\Delta Q}{\Delta t}$$

$$I = neAv_d; \quad n = \frac{\rho N_A}{m}$$

$$V = IR$$

$$R = \frac{\rho L}{A}$$

$$R_{series} = \sum_{i=1}^N R_i$$

$$\frac{1}{R_{parallel}} = \sum_{i=1}^N \frac{1}{R_i}$$

$$P = \frac{\Delta E}{\Delta t} = IV = I^2 R = \frac{V^2}{R}$$

### Light as a Particle/Relativity

$$E = hf = \frac{hc}{\lambda}$$

$$K_{max} = hf - \phi$$

$$\Delta \lambda = \lambda' - \lambda = \frac{h}{mc} (1 - \cos \phi)$$

$$\frac{1}{E'} = \frac{1}{E} + \frac{(1 - \cos \phi)}{E_{rest}}; \quad E_{rest} = mc^2$$

$$\gamma = \frac{1}{\sqrt{1 - \frac{v^2}{c^2}}}$$

$$p = \gamma mv$$

$$E_{total} = E_{rest} + K = \gamma mc^2$$

$$K = (\gamma - 1)mc^2$$

$$E_{total}^2 = p^2 c^2 + m^2 c^4$$

## Nuclear Physics

$$N = N_0 e^{-\lambda t}$$

$$m = m_0 e^{-\lambda t}$$

$$A = A_0 e^{-\lambda t}$$

$$A = \lambda N$$

$$t_{\frac{1}{2}} = \frac{\ln 2}{\lambda}$$

## Constants

$$g = 9.8 \frac{m}{s^2}$$

$$1e = 1.6 \times 10^{-19} C$$

$$k = \frac{1}{4\pi\epsilon_0} = 9 \times 10^9 \frac{Nm^2}{C^2}$$

$$\epsilon_0 = 8.85 \times 10^{-12} \frac{C^2}{Nm^2}$$

$$1eV = 1.6 \times 10^{-19} J$$

$$\mu_0 = 4\pi \times 10^{-7} \frac{Tm}{A}$$

$$c = 3 \times 10^8 \frac{m}{s}$$

$$h = 6.63 \times 10^{-34} Js = 4.14 \times 10^{-15} eVs$$

$$N_A = 6.02 \times 10^{23}$$

$$1u = 1.66 \times 10^{-27} kg = 931.5 \frac{MeV}{c^2}$$

$$m_p = 1.67 \times 10^{-27} kg = 937.1 \frac{MeV}{c^2}$$

$$m_n = 1.69 \times 10^{-27} kg = 948.3 \frac{MeV}{c^2}$$

$$m_e = 9.11 \times 10^{-31} kg = 0.511 \frac{MeV}{c^2}$$

## Physics 110 Formulas

$$\vec{F} = m\vec{a}; \quad F_G = \frac{GM_1 m_2}{r^2}; \quad F_s = -ky; \quad a_c = \frac{v^2}{r}$$

$$W = -\Delta U_g - \Delta U_s = \Delta K$$

$$U_g = mgy$$

$$U_s = \frac{1}{2}ky^2$$

$$K = \frac{1}{2}mv^2$$

$$\vec{r}_f = \vec{r}_i + \vec{v}_i t + \frac{1}{2}\vec{a}t^2$$

$$\vec{v}_f = \vec{v}_i + \vec{a}t$$

$$v_f^2 = v_i^2 + 2a_r \Delta r$$

## Common Metric Units

$$\text{nano (n)} = 10^{-9}$$

$$\text{micro (\mu)} = 10^{-6}$$

$$\text{milli (m)} = 10^{-3}$$

$$\text{centi (c)} = 10^{-2}$$

$$\text{kilo (k)} = 10^3$$

$$\text{mega (M)} = 10^6$$

## Geometry/Algebra

$$\text{Circles:} \quad A = \pi r^2 \quad C = 2\pi r = \pi$$

$$\text{Spheres:} \quad A = 4\pi r^2 \quad V = \frac{4}{3}\pi r^3$$

$$\text{Triangles:} \quad A = \frac{1}{2}bh$$

$$\text{Quadratics:} \quad ax^2 + bx + c = 0 \rightarrow x = \frac{-b \pm \sqrt{b^2 - 4ac}}{2a}$$

# PERIODIC TABLE OF ELEMENTS

1	2	3	4	5	6	7	8	9	10	11	12	13	14	15	16	17	18
1 <b>H</b> Hydrogen 1.008	Atomic # Symbol Name Weight																2 <b>He</b> Helium 4.0026
3 <b>Li</b> Lithium 6.94	4 <b>Be</b> Beryllium 9.0122																
5 <b>B</b> Boron 10.81	6 <b>C</b> Carbon 12.011	7 <b>N</b> Nitrogen 14.007	8 <b>O</b> Oxygen 15.999	9 <b>F</b> Fluorine 18.998	10 <b>Ne</b> Neon 20.180												
11 <b>Na</b> Sodium 22.990	12 <b>Mg</b> Magnesium 24.305																
13 <b>Al</b> Aluminum 26.982	14 <b>Si</b> Silicon 28.086	15 <b>P</b> Phosphorus 30.974	16 <b>S</b> Sulfur 32.06	17 <b>Cl</b> Chlorine 35.45	18 <b>Ar</b> Argon 39.948												
19 <b>K</b> Potassium 39.098	20 <b>Ca</b> Calcium 40.078	21 <b>Sc</b> Scandium 44.956	22 <b>Ti</b> Titanium 47.867	23 <b>V</b> Vanadium 50.942	24 <b>Cr</b> Chromium 51.996	25 <b>Mn</b> Manganese 54.938	26 <b>Fe</b> Iron 55.845	27 <b>Co</b> Cobalt 58.933	28 <b>Ni</b> Nickel 58.693	29 <b>Cu</b> Copper 63.546	30 <b>Zn</b> Zinc 65.38	31 <b>Ga</b> Gallium 69.723	32 <b>Ge</b> Germanium 72.630	33 <b>As</b> Arsenic 74.922	34 <b>Se</b> Selenium 78.971	35 <b>Br</b> Bromine 79.904	36 <b>Kr</b> Krypton 83.798
37 <b>Rb</b> Rubidium 85.468	38 <b>Sr</b> Strontium 87.62	39 <b>Y</b> Yttrium 88.906	40 <b>Zr</b> Zirconium 91.224	41 <b>Nb</b> Niobium 92.906	42 <b>Mo</b> Molybdenum 95.95	43 <b>Tc</b> Technetium (98)	44 <b>Ru</b> Ruthenium 101.07	45 <b>Rh</b> Rhodium 102.91	46 <b>Pd</b> Palladium 106.42	47 <b>Ag</b> Silver 107.87	48 <b>Cd</b> Cadmium 112.41	49 <b>In</b> Indium 114.82	50 <b>Sn</b> Tin 118.71	51 <b>Sb</b> Antimony 121.76	52 <b>Te</b> Tellurium 127.60	53 <b>I</b> Iodine 126.90	54 <b>Xe</b> Xenon 131.29
55 <b>Cs</b> Cesium 132.91	56 <b>Ba</b> Barium 137.33	57-71	72 <b>Hf</b> Hafnium 178.49	73 <b>Ta</b> Tantalum 180.95	74 <b>W</b> Tungsten 183.84	75 <b>Re</b> Rhenium 186.21	76 <b>Os</b> Osmium 190.23	77 <b>Ir</b> Iridium 192.22	78 <b>Pt</b> Platinum 195.08	79 <b>Au</b> Gold 196.97	80 <b>Hg</b> Mercury 200.59	81 <b>Tl</b> Thallium 204.38	82 <b>Pb</b> Lead 207.2	83 <b>Bi</b> Bismuth 208.98	84 <b>Po</b> Polonium (209)	85 <b>At</b> Astatine (210)	86 <b>Rn</b> Radon (222)
87 <b>Fr</b> Francium (223)	88 <b>Ra</b> Radium (226)	89-103	104 <b>Rf</b> Rutherfordium (261)	105 <b>Db</b> Dubnium (268)	106 <b>Sg</b> Seaborgium (269)	107 <b>Bh</b> Bohrium (270)	108 <b>Hs</b> Hassium (277)	109 <b>Mt</b> Meitnerium (278)	110 <b>Ds</b> Darmstadtium (281)	111 <b>Rg</b> Roentgenium (282)	112 <b>Cn</b> Copernicium (285)	113 <b>Nh</b> Nihonium (286)	114 <b>Fl</b> Flerovium (289)	115 <b>Mc</b> Moscovium (290)	116 <b>Lv</b> Livermorium (293)	117 <b>Ts</b> Tennessine (294)	118 <b>Og</b> Oganesson (294)
For elements with no stable isotopes, the mass number of the isotope with the longest half-life is in parentheses.																	
57 <b>La</b> Lanthanum 138.91	58 <b>Ce</b> Cerium 140.12	59 <b>Pr</b> Praseodymium 140.91	60 <b>Nd</b> Neodymium 144.24	61 <b>Pm</b> Promethium (145)	62 <b>Sm</b> Samarium 150.36	63 <b>Eu</b> Europium 151.96	64 <b>Gd</b> Gadolinium 157.25	65 <b>Tb</b> Terbium 158.93	66 <b>Dy</b> Dysprosium 162.50	67 <b>Ho</b> Holmium 164.93	68 <b>Er</b> Erbium 167.26	69 <b>Tm</b> Thulium 168.93	70 <b>Yb</b> Ytterbium 173.05	71 <b>Lu</b> Lutetium 174.97			
89 <b>Ac</b> Actinium (227)	90 <b>Th</b> Thorium 232.04	91 <b>Pa</b> Protactinium 231.04	92 <b>U</b> Uranium 238.03	93 <b>Np</b> Neptunium (237)	94 <b>Pu</b> Plutonium (244)	95 <b>Am</b> Americium (243)	96 <b>Cm</b> Curium (247)	97 <b>Bk</b> Berkelium (247)	98 <b>Cf</b> Californium (251)	99 <b>Es</b> Einsteinium (252)	100 <b>Fm</b> Fermium (257)	101 <b>Md</b> Mendelevium (258)	102 <b>No</b> Nobelium (259)	103 <b>Lr</b> Lawrencium (260)			

Source: Copyright © 2017 Michael Dayan (michael@dayan.com). For a fully interactive version with orbitals, isotopes, compounds, and free printouts, visit <http://www.ptable.com/>