

Physics 111

Exam #1

January 19, 2024

Name _____

Please read and follow these instructions carefully:

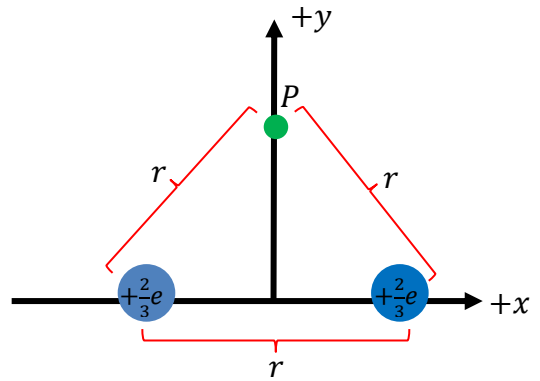
- Read all problems carefully before attempting to solve them.
- Your work must be legible, and the organization clear.
- You must show all work, including correct vector notation.
- You will not receive full credit for correct answers without adequate explanations.
- You will not receive full credit if incorrect work or explanations are mixed in with correct work. So erase or cross out anything you don't want graded.
- Make explanations complete but brief. Do not write a lot of prose.
- Include diagrams.
- Show what goes into a calculation, not just the final number. For example,
 $|\vec{p}| \approx m|\vec{v}| = (5\text{kg}) \times (2 \frac{\text{m}}{\text{s}}) = 10 \frac{\text{kg} \cdot \text{m}}{\text{s}}$
- Give standard SI units with your results unless specifically asked for a certain unit.
- Unless specifically asked to derive a result, you may start with the formulas given on the formula sheet including equations corresponding to the fundamental concepts.
- Go for partial credit. If you cannot do some portion of a problem, invent a symbol and/or value for the quantity you can't calculate (explain that you are doing this), and use it to do the rest of the problem.
- Each free-response part is worth 6 points.

Problem #1	/24
Problem #2	/24
Problem #3	/24
Total	/72

I affirm that I have carried out my academic endeavors with full academic honesty.

1. A proton is a composite particle made up out of three quarks. There are two “up” quarks each with charge $+\frac{2}{3}e$ and one “down” quark with charge $-\frac{1}{3}e$.

- a. Consider the two “up” quarks placed on the x-axis shown below, where the two “up” quarks are separated by a distance $r = 2 \times 10^{-15}m$. What is the net electric field at a point P , located equidistant from both “up” quarks shown on the diagram by an amount $r = 2 \times 10^{-15}m$?



- b. Suppose that the “down” quark were placed at point P , what would be the net force on the “down” quark?

c. What is the electrostatic potential energy of the assembled three-quark system?

d. Instead of the proton (and the three quarks) consider the following situation. A small charge $-q$ is initially located very far away from a large charge $-Q$. The small charge is then thrown at the large charge with a speed v_i . Of the following, which is/are allowed, and which is/are not allowed. Be sure to explain your answer in as much detail as possible.

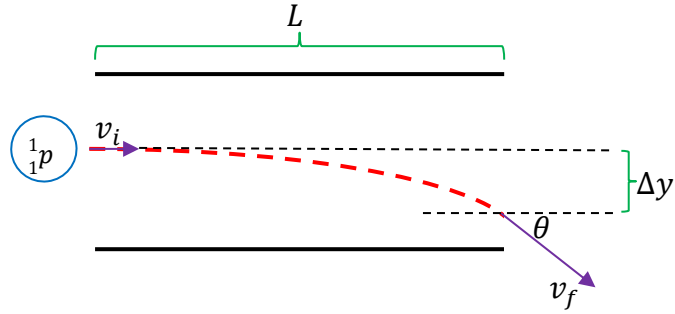
1. $\Delta U_e > 0$ and $\Delta K > 0$.

2. $\Delta U_e < 0$ and $\Delta K > 0$.

3. $\Delta U_e > 0$ and $\Delta K < 0$.

4. $\Delta U_e < 0$ and $\Delta K < 0$.

2. Two horizontal parallel metal plates $L = 4\text{m}$ long are charged using a battery (not shown). A proton (1_1p) is incident from the left traveling to the right at an initial speed $v_i = 1.5 \times 10^7 \frac{\text{m}}{\text{s}}$. As the proton passes through the plates, it is deflected downward following the red path as shown and exits at an angle θ below the horizontal with a speed v_f . During the proton's travel through the plates, the proton undergoes a vertical displacement, $\Delta y = -30\text{cm}$.



- a. How much time does the proton spend traveling between the plates?
- b. What is the magnitude and direction of the assumed constant electric field needed to produce this motion of the proton?

c. What is the magnitude (v_f) and direction (θ) of the exit velocity of the proton?

d. In order for the proton to enter the plates from the left at $v_i = 1.5 \times 10^7 \frac{m}{s}$, it must have been accelerated. Through what potential difference was the proton accelerated to acquire the speed $v_i = 1.5 \times 10^7 \frac{m}{s}$? Assume the proton started from rest.

- c. Suppose that the constant electric field E were generated by a set of parallel square metal plates with sides of length $L = 20\text{cm}$ separated by a distance 25cm . How much charge was placed on a plate of the capacitor? Assume that the capacitor is air-filled.
- d. What was the voltage V of the battery that was used to charge the capacitor plates used to generate the vertical electric field E and what plate, upper or lower, was at the higher potential (voltage)? Be sure to explain your choice for which plate is at the higher voltage.

Physics 111 Formula Sheet

Electrostatics

$$F = k \frac{q_1 q_2}{r^2}$$

$$\vec{F} = q\vec{E}; \quad E_{pc} = k \frac{q}{r^2}; \quad E_{plate} = \frac{q}{\epsilon_0 A}$$

$$E = -\frac{\Delta V}{\Delta x}$$

$$V_{pc} = k \frac{q}{r}$$

$$U_e = k \frac{q_1 q_2}{r} = qV$$

$$W = -q\Delta V = -\Delta U_e = \Delta K$$

Electric Circuits - Capacitors

$$Q = CV; \quad C = \frac{\kappa \epsilon_0 A}{d}$$

$$C_{parallel} = \sum_{i=1}^N C_i$$

$$\frac{1}{C_{series}} = \sum_{i=1}^N \frac{1}{C_i}$$

$$Q_{charging}(t) = Q_{max} \left(1 - e^{-\frac{t}{\tau}}\right)$$

$$Q_{discharging}(t) = Q_{max} e^{-\frac{t}{\tau}}$$

$$I(t) = I_{max} e^{-\frac{t}{\tau}} = \frac{Q_{max}}{\tau} e^{-\frac{t}{\tau}}$$

$$\tau = RC$$

$$U_C = \frac{1}{2}qV = \frac{1}{2}CV^2 = \frac{Q^2}{2C}$$

Light as a Wave

$$c = f\lambda$$

$$S(t) = \frac{\text{Energy}}{\text{time} \times \text{Area}} = c\epsilon_0 E^2(t) = c \frac{B^2(t)}{\mu_0}$$

$$I = S_{avg} = \frac{1}{2}c\epsilon_0 E_{max}^2 = c \frac{B_{max}^2}{2\mu_0}$$

$$P = \begin{cases} \frac{S}{c}; & \text{absorbed} \\ \frac{2S}{c}; & \text{reflected} \end{cases}$$

$$S = S_0 \cos^2 \theta$$

$$v = \frac{c}{n}$$

$$\theta_{incident} = \theta_{reflected}$$

$$n_1 \sin \theta_1 = n_2 \sin \theta_2$$

$$P = \frac{1}{f} = \frac{1}{d_o} + \frac{1}{d_i}$$

$$M = \frac{d_i}{d_o}; \quad |M| = \frac{h_i}{h_o}$$

Magnetism

$$\vec{F} = q\vec{v} \times \vec{B} \rightarrow F = qvB \sin \theta$$

$$\vec{F} = I\vec{L} \times \vec{B} \rightarrow F = ILB \sin \theta$$

$$V_{Hall} = wv_d B$$

$$B = \frac{\mu_0 I}{2\pi r}$$

$$\mathcal{E} = \Delta V = -N \frac{\Delta \phi_B}{\Delta t}$$

$$\phi_B = BA \cos \theta$$

Electric Circuits - Resistors

$$I = \frac{\Delta Q}{\Delta t}$$

$$I = neAv_d; \quad n = \frac{\rho N_A}{m}$$

$$V = IR$$

$$R = \frac{\rho L}{A}$$

$$R_{series} = \sum_{i=1}^N R_i$$

$$\frac{1}{R_{parallel}} = \sum_{i=1}^N \frac{1}{R_i}$$

$$P = \frac{\Delta E}{\Delta t} = IV = I^2 R = \frac{V^2}{R}$$

Light as a Particle/Relativity

$$E = hf = \frac{hc}{\lambda}$$

$$K_{max} = hf - \phi$$

$$\Delta \lambda = \lambda' - \lambda = \frac{h}{mc} (1 - \cos \phi)$$

$$\frac{1}{E'} = \frac{1}{E} + \frac{(1 - \cos \phi)}{E_{rest}}; \quad E_{rest} = mc^2$$

$$\gamma = \frac{1}{\sqrt{1 - \frac{v^2}{c^2}}}$$

$$p = \gamma mv$$

$$E_{total} = E_{rest} + K = \gamma mc^2$$

$$K = (\gamma - 1)mc^2$$

$$E_{total}^2 = p^2 c^2 + m^2 c^4$$

Nuclear Physics

$$N = N_0 e^{-\lambda t}$$

$$m = m_0 e^{-\lambda t}$$

$$A = A_0 e^{-\lambda t}$$

$$A = \lambda N$$

$$t_{\frac{1}{2}} = \frac{\ln 2}{\lambda}$$

Constants

$$g = 9.8 \frac{m}{s^2}$$

$$1e = 1.6 \times 10^{-19} C$$

$$k = \frac{1}{4\pi\epsilon_0} = 9 \times 10^9 \frac{Nm^2}{C^2}$$

$$\epsilon_0 = 8.85 \times 10^{-12} \frac{C^2}{Nm^2}$$

$$1eV = 1.6 \times 10^{-19} J$$

$$\mu_0 = 4\pi \times 10^{-7} \frac{Tm}{A}$$

$$c = 3 \times 10^8 \frac{m}{s}$$

$$h = 6.63 \times 10^{-34} Js = 4.14 \times 10^{-15} eVs$$

$$N_A = 6.02 \times 10^{23}$$

$$1u = 1.66 \times 10^{-27} kg = 931.5 \frac{MeV}{c^2}$$

$$m_p = 1.67 \times 10^{-27} kg = 937.1 \frac{MeV}{c^2}$$

$$m_n = 1.69 \times 10^{-27} kg = 948.3 \frac{MeV}{c^2}$$

$$m_e = 9.11 \times 10^{-31} kg = 0.511 \frac{MeV}{c^2}$$

Physics 110 Formulas

$$\vec{F} = m\vec{a}; \quad F_G = \frac{GM_1 m_2}{r^2}; \quad F_s = -ky; \quad a_c = \frac{v^2}{r}$$

$$W = -\Delta U_g - \Delta U_s = \Delta K$$

$$U_g = mgy$$

$$U_s = \frac{1}{2}ky^2$$

$$K = \frac{1}{2}mv^2$$

$$\vec{r}_f = \vec{r}_i + \vec{v}_i t + \frac{1}{2}\vec{a}t^2$$

$$\vec{v}_f = \vec{v}_i + \vec{a}t$$

$$v_f^2 = v_i^2 + 2a_r \Delta r$$

Common Metric Units

$$\text{nano (n)} = 10^{-9}$$

$$\text{micro (\mu)} = 10^{-6}$$

$$\text{milli (m)} = 10^{-3}$$

$$\text{centi (c)} = 10^{-2}$$

$$\text{kilo (k)} = 10^3$$

$$\text{mega (M)} = 10^6$$

Geometry/Algebra

$$\text{Circles:} \quad A = \pi r^2 \quad C = 2\pi r = \pi$$


$$\text{Spheres:} \quad A = 4\pi r^2 \quad V = \frac{4}{3}\pi r^3$$

$$\text{Triangles:} \quad A = \frac{1}{2}bh$$

$$\text{Quadratics:} \quad ax^2 + bx + c = 0 \rightarrow x = \frac{-b \pm \sqrt{b^2 - 4ac}}{2a}$$

PERIODIC TABLE OF ELEMENTS

1	2	3	4	5	6	7	8	9	10	11	12	13	14	15	16	17	18	
1 H Hydrogen 1.008	Atomic # Symbol Name Weight																2 He Helium 4.0026	
3 Li Lithium 6.94	4 Be Beryllium 9.0122																	
5 B Boron 10.81	6 C Carbon 12.011	7 N Nitrogen 14.007	8 O Oxygen 15.999	9 F Fluorine 18.998	10 Ne Neon 20.180													
11 Na Sodium 22.990	12 Mg Magnesium 24.305																	
13 Al Aluminum 26.982	14 Si Silicon 28.086	15 P Phosphorus 30.974	16 S Sulfur 32.06	17 Cl Chlorine 35.45	18 Ar Argon 39.948													
19 K Potassium 39.098	20 Ca Calcium 40.078	21 Sc Scandium 44.956	22 Ti Titanium 47.867	23 V Vanadium 50.942	24 Cr Chromium 51.996	25 Mn Manganese 54.938	26 Fe Iron 55.845	27 Co Cobalt 58.933	28 Ni Nickel 58.693	29 Cu Copper 63.546	30 Zn Zinc 65.38	31 Ga Gallium 69.723	32 Ge Germanium 72.630	33 As Arsenic 74.922	34 Se Selenium 78.971	35 Br Bromine 79.904	36 Kr Krypton 83.798	
37 Rb Rubidium 85.468	38 Sr Strontium 87.62	39 Y Yttrium 88.906	40 Zr Zirconium 91.224	41 Nb Niobium 92.906	42 Mo Molybdenum 95.95	43 Tc Technetium (98)	44 Ru Ruthenium 101.07	45 Rh Rhodium 102.91	46 Pd Palladium 106.42	47 Ag Silver 107.87	48 Cd Cadmium 112.41	49 In Indium 114.82	50 Sn Tin 118.71	51 Sb Antimony 121.76	52 Te Tellurium 127.60	53 I Iodine 126.90	54 Xe Xenon 131.29	
55 Cs Cesium 132.91	56 Ba Barium 137.33	57–71		72 Hf Hafnium 178.49	73 Ta Tantalum 180.95	74 W Tungsten 183.84	75 Re Rhenium 186.21	76 Os Osmium 190.23	77 Ir Iridium 192.22	78 Pt Platinum 195.08	79 Au Gold 196.97	80 Hg Mercury 200.59	81 Tl Thallium 204.38	82 Pb Lead 207.2	83 Bi Bismuth 208.98	84 Po Polonium (209)	85 At Astatine (210)	86 Rn Radon (222)
87 Fr Francium (223)	88 Ra Radium (226)	89–103		104 Rf Rutherfordium (261)	105 Db Dubnium (268)	106 Sg Seaborgium (269)	107 Bh Bohrium (270)	108 Hs Hassium (277)	109 Mt Meitnerium (278)	110 Ds Darmstadtium (281)	111 Rg Roentgenium (282)	112 Cn Copernicium (285)	113 Nh Nihonium (286)	114 Fl Flerovium (289)	115 Mc Moscovium (290)	116 Lv Livermorium (293)	117 Ts Tennessine (294)	118 Og Oganesson (294)
For elements with no stable isotopes, the mass number of the isotope with the longest half-life is in parentheses.																		
57 La Lanthanum 138.91	58 Ce Cerium 140.12	59 Pr Praseodymium 140.91	60 Nd Neodymium 144.24	61 Pm Promethium (145)	62 Sm Samarium 150.36	63 Eu Europium 151.96	64 Gd Gadolinium 157.25	65 Tb Terbium 158.93	66 Dy Dysprosium 162.50	67 Ho Holmium 164.93	68 Er Erbium 167.26	69 Tm Thulium 168.93	70 Yb Ytterbium 173.05	71 Lu Lutetium 174.97				
89 Ac Actinium (227)	90 Th Thorium 232.04	91 Pa Protactinium 231.04	92 U Uranium 238.03	93 Np Neptunium (237)	94 Pu Plutonium (244)	95 Am Americium (243)	96 Cm Curium (247)	97 Bk Berkelium (247)	98 Cf Californium (251)	99 Es Einsteinium (252)	100 Fm Fermium (257)	101 Md Mendelevium (258)	102 No Nobelium (259)	103 Lr Lawrencium (260)				



Ptable
.com

Source: Copyright © 2017 Michael Dayan (michael@dayan.com). For a fully interactive version with orbitals, isotopes, compounds, and free printouts, visit <http://www.ptable.com/>