

Physics 111

Exam #2

October 28, 2022

Name _____

Please read and follow these instructions carefully:

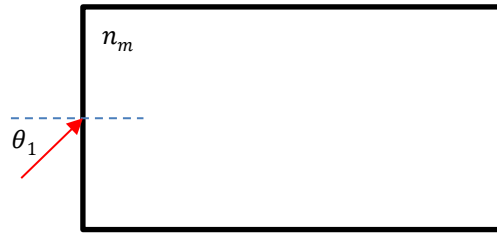
- Read all problems carefully before attempting to solve them.
- Your work must be legible, and the organization clear.
- You must show all work, including correct vector notation.
- You will not receive full credit for correct answers without adequate explanations.
- You will not receive full credit if incorrect work or explanations are mixed in with correct work. So erase or cross out anything you don't want graded.
- Make explanations complete but brief. Do not write a lot of prose.
- Include diagrams.
- Show what goes into a calculation, not just the final number. For example,
$$|\vec{p}| \approx m|\vec{v}| = (5\text{kg}) \times (2 \frac{\text{m}}{\text{s}}) = 10 \frac{\text{kg} \cdot \text{m}}{\text{s}}$$
- Give standard SI units with your results unless specifically asked for a certain unit.
- Unless specifically asked to derive a result, you may start with the formulas given on the formula sheet including equations corresponding to the fundamental concepts.
- Go for partial credit. If you cannot do some portion of a problem, invent a symbol and/or value for the quantity you can't calculate (explain that you are doing this), and use it to do the rest of the problem.
- Each free-response part is worth 6 points.

Problem #1	/24
Problem #2	/24
Problem #3	/24
Total	/72

I affirm that I have carried out my academic endeavors with full academic honesty.

- c. When the proton leaves the box through the hole in the upper surface, the proton is subject only to the Earth's magnetic field. Which way does the proton move in the magnetic field and what is the radius of its orbit?
- d. When the proton is in the magnetic field only region it takes the proton a time T to complete one full orbit through the magnetic field at speed v . Suppose that a second proton were given an initial speed of $2v$ and this second proton moves upward away from the Earth's surface through the box and out of the hole at the upper surface. To get this second proton out, what would have to happen to the magnitude and direction of the electric field inside of the box and when the proton leaves the box and enters the magnetic field only region, what is its new orbital period in terms of T ?

2. Red light from a laser ($\lambda_{red} = 632nm$) is incident from the air onto a block of material of unknown index of refraction n_m as shown below.



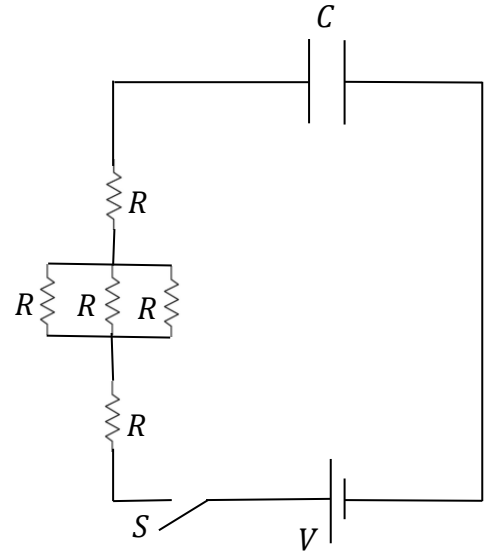
- a. If the laser has a maximum power output of $200W$ and makes a circular spot $3mm$ in diameter on the materials surface, what are the maximum values of the electric and magnetic fields in the laser light?
- b. Suppose that the laser light is incident on the material at an angle $\theta_1 = 60^\circ$ measured with respect to the normal to the surface of the material. If the laser light is totally internally reflected from the upper surface, what is the critical angle between the air/material interface? Hint: You will need $\sin(A - B) = \sin A \cos B - \cos A \sin B$.

c. What is the index of refraction of the material?

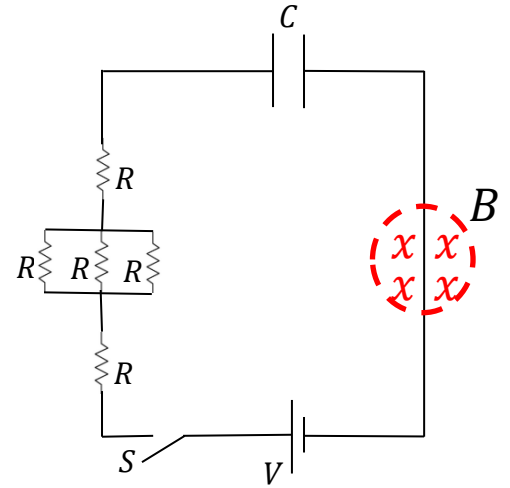
d. When the light strikes the material, some of the light is reflected from the surface of the material and some of it is transmitted into the material. What is the frequency, wavelength and speed of the light that gets transmitted into the material?

3. A resistor R , uncharged parallel-plate capacitor C , and a battery V are connected to an open switch S as shown below.

- a. The resistance of each resistor in the circuit is $R = 100k\Omega$ and the resistors and capacitor are connected to a $V = 6700V$ battery. When the switch S is closed the capacitor begins to charge. Between the plates of the capacitor there is a $0.2\mu m$ piece of material with a dielectric constant $\kappa = 210$. If the time constant of the circuit is needed to be $\tau = 0.5hr$, what is the area A of a plate in the capacitor?

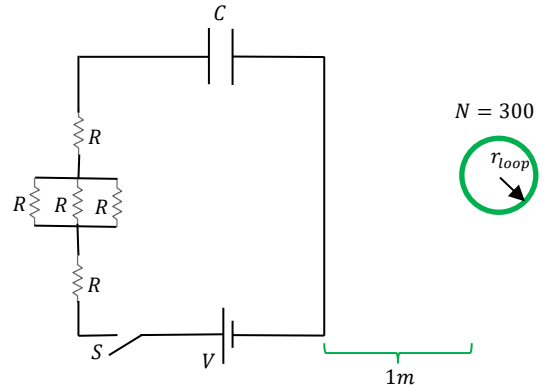


- b. Measurements of the current in the circuit show that the current varies in time as the capacitor charges according to $I = I_{max}e^{-\frac{t}{R_{eq}C}}$ and part of the right-hand side of the circuit passes through a pair of circular poles of a magnet 5cm in diameter with a strength $B = 1.5\text{T}$. At a time $t = 3\tau$, where τ is the time constant of the circuit, what is the magnetic force on the right-hand side of the wire?



- c. At a time $t = 3\tau$, what is the power dissipated across all the resistors in the circuit if the current is again given by $I = I_{max}e^{-\frac{t}{R_{eq}C}}$?

- d. Suppose that the magnet is removed from the right-hand side of the circuit and that a $N = 300$ turn coil of nickel wire ($\rho_{Ni} = 8908 \frac{kg}{m^3}$, $M_{Ni} = 59 \frac{g}{mol}$, $\rho = 6.99 \times 10^{-8} \Omega m$) with loop radius $r_{loop} = 0.25 cm$ is placed a distance $1m$ to the right of the right-hand side of the circuit as shown below. If the resistance of the nickel wire loop is 2Ω , what are the magnitude and direction of the induced current in the wire loop over a time interval $0 \leq t \leq 3\tau$ after the switch is closed and the uncharged capacitor begins to charge.



You may assume that the right-hand side wire is very long and that only the current flowing through it contributes to the magnetic flux through the loop.

Physics 111 Formula Sheet

Electrostatics

$$F = k \frac{q_1 q_2}{r^2}$$

$$\vec{F} = q\vec{E}; \quad E_{pc} = k \frac{q}{r^2}; \quad E_{plate} = \frac{q}{\epsilon_0 A}$$

$$E = -\frac{\Delta V}{\Delta x}$$

$$V = k \frac{q}{r}$$

$$U_e = k \frac{q_1 q_2}{r} = qV$$

$$W = -q\Delta V = -\Delta U_e = \Delta K$$

Electric Circuits - Capacitors

$$Q = CV; \quad C = \frac{\kappa \epsilon_0 A}{d}$$

$$C_{parallel} = \sum_{i=1}^N C_i$$

$$\frac{1}{C_{series}} = \sum_{i=1}^N \frac{1}{C_i}$$

$$Q_{charging}(t) = Q_{max} \left(1 - e^{-\frac{t}{\tau}}\right)$$

$$Q_{discharging}(t) = Q_{max} e^{-\frac{t}{\tau}}$$

$$I(t) = I_{max} e^{-\frac{t}{\tau}} = \frac{Q_{max}}{\tau} e^{-\frac{t}{\tau}}$$

$$\tau = RC$$

$$U_C = \frac{1}{2} qV = \frac{1}{2} CV^2 = \frac{Q^2}{2C}$$

Light as a Wave

$$c = f\lambda$$

$$S(t) = \frac{\text{Energy}}{\text{time} \times \text{Area}} = c\epsilon_0 E^2(t) = c \frac{B^2(t)}{\mu_0}$$

$$I = S_{avg} = \frac{1}{2} c\epsilon_0 E_{max}^2 = c \frac{B_{max}^2}{2\mu_0}$$

$$P = \begin{cases} \frac{S}{c}; & \text{absorbed} \\ \frac{2S}{c}; & \text{reflected} \end{cases}$$

$$S = S_0 \cos^2 \theta$$

$$v = \frac{c}{n}$$

$$\theta_{incident} = \theta_{reflected}$$

$$n_1 \sin \theta_1 = n_2 \sin \theta_2$$

$$P = \frac{1}{f} = \frac{1}{d_o} + \frac{1}{d_i}$$

$$M = -\frac{d_i}{d_o}; \quad |M| = \frac{h_i}{h_o}$$

Magnetism

$$\vec{F} = q\vec{v} \times \vec{B} \rightarrow F = qvB \sin \theta$$

$$\vec{F} = I\vec{L} \times \vec{B} \rightarrow F = ILB \sin \theta$$

$$V_{Hall} = wv_d B$$

$$B = \frac{\mu_0 I}{2\pi r}$$

$$\mathcal{E} = \Delta V = -N \frac{\Delta \phi_B}{\Delta t}$$

$$\phi_B = BA \cos \theta$$

Electric Circuits - Resistors

$$I = \frac{\Delta Q}{\Delta t}$$

$$I = neAv_d; \quad n = \frac{\rho N_A}{m}$$

$$V = IR$$

$$R = \frac{\rho L}{A}$$

$$R_{series} = \sum_{i=1}^N R_i$$

$$\frac{1}{R_{parallel}} = \sum_{i=1}^N \frac{1}{R_i}$$

$$P = \frac{\Delta E}{\Delta t} = IV = I^2 R = \frac{V^2}{R}$$

Light as a Particle/Relativity

$$E = hf = \frac{hc}{\lambda}$$

$$K_{max} = hf - \phi$$

$$\Delta \lambda = \lambda' - \lambda = \frac{h}{mc} (1 - \cos \phi)$$

$$\frac{1}{E'} = \frac{1}{E} + \frac{(1 - \cos \phi)}{E_{rest}}; \quad E_{rest} = mc^2$$

$$\gamma = \frac{1}{\sqrt{1 - \frac{v^2}{c^2}}}$$

$$p = \gamma mv$$

$$E_{total} = E_{rest} + K = \gamma mc^2$$

$$K = (\gamma - 1)mc^2$$

$$E_{total}^2 = p^2 c^2 + m^2 c^4$$

Nuclear Physics

$$N = N_0 e^{-\lambda t}$$

$$m = m_0 e^{-\lambda t}$$

$$A = A_0 e^{-\lambda t}$$

$$A = \lambda N$$

$$t_{\frac{1}{2}} = \frac{\ln 2}{\lambda}$$

Constants

$$g = 9.8 \frac{m}{s^2}$$

$$1e = 1.6 \times 10^{-19} C$$

$$k = \frac{1}{4\pi\epsilon_0} = 9 \times 10^9 \frac{Nm^2}{C^2}$$

$$\epsilon_0 = 8.85 \times 10^{-12} \frac{C^2}{Nm^2}$$

$$1eV = 1.6 \times 10^{-19} J$$

$$\mu_0 = 4\pi \times 10^{-7} \frac{Tm}{A}$$

$$c = 3 \times 10^8 \frac{m}{s}$$

$$h = 6.63 \times 10^{-34} Js = 4.14 \times 10^{-15} eVs$$

$$N_A = 6.02 \times 10^{23}$$

$$1u = 1.66 \times 10^{-27} kg = 931.5 \frac{MeV}{c^2}$$

$$m_p = 1.67 \times 10^{-27} kg = 937.1 \frac{MeV}{c^2}$$

$$m_n = 1.69 \times 10^{-27} kg = 948.3 \frac{MeV}{c^2}$$

$$m_e = 9.11 \times 10^{-31} kg = 0.511 \frac{MeV}{c^2}$$

Physics 110 Formulas

$$\vec{F} = m\vec{a}; \quad F_G = \frac{GM_1 m_2}{r^2}; \quad F_s = -ky; \quad a_c = \frac{v^2}{r}$$

$$W = -\Delta U_g - \Delta U_s = \Delta K$$

$$U_g = mgy$$

$$U_s = \frac{1}{2}ky^2$$

$$K = \frac{1}{2}mv^2$$

$$\vec{r}_f = \vec{r}_i + \vec{v}_i t + \frac{1}{2}\vec{a}t^2$$

$$\vec{v}_f = \vec{v}_i + \vec{a}t$$

$$v_f^2 = v_i^2 + 2a_r \Delta r$$

Common Metric Units

$$\text{nano (n)} = 10^{-9}$$

$$\text{micro (\mu)} = 10^{-6}$$

$$\text{milli (m)} = 10^{-3}$$

$$\text{centi (c)} = 10^{-2}$$

$$\text{kilo (k)} = 10^3$$

$$\text{mega (M)} = 10^6$$

Geometry/Algebra

$$\text{Circles:} \quad A = \pi r^2 \quad C = 2\pi r = \pi$$

$$\text{Spheres:} \quad A = 4\pi r^2 \quad V = \frac{4}{3}\pi r^3$$

$$\text{Triangles:} \quad A = \frac{1}{2}bh$$

$$\text{Quadratics:} \quad ax^2 + bx + c = 0 \rightarrow x = \frac{-b \pm \sqrt{b^2 - 4ac}}{2a}$$

PERIODIC TABLE OF ELEMENTS

1 | 2 | 3 | 4 | 5 | 6 | 7 | 8 | 9 | 10 | 11 | 12 | 13 | 14 | 15 | 16 | 17 | 18

1 H Hydrogen 1.008	Atomic # Symbol Name Weight																2 He Helium 4.0026	
3 Li Lithium 6.94	4 Be Beryllium 9.0122																	
5 B Boron 10.81	6 C Carbon 12.011	7 N Nitrogen 14.007	8 O Oxygen 15.999	9 F Fluorine 18.998	10 Ne Neon 20.180													
11 Na Sodium 22.990	12 Mg Magnesium 24.305																	
13 Al Aluminum 26.982	14 Si Silicon 28.085	15 P Phosphorus 30.974	16 S Sulfur 32.06	17 Cl Chlorine 35.45	18 Ar Argon 39.948													
19 K Potassium 39.098	20 Ca Calcium 40.078	21 Sc Scandium 44.956	22 Ti Titanium 47.867	23 V Vanadium 50.942	24 Cr Chromium 51.996	25 Mn Manganese 54.938	26 Fe Iron 55.845	27 Co Cobalt 58.933	28 Ni Nickel 58.693	29 Cu Copper 63.546	30 Zn Zinc 65.38	31 Ga Gallium 69.723	32 Ge Germanium 72.630	33 As Arsenic 74.922	34 Se Selenium 78.971	35 Br Bromine 79.904	36 Kr Krypton 83.796	
37 Rb Rubidium 85.468	38 Sr Strontium 87.62	39 Y Yttrium 88.906	40 Zr Zirconium 91.224	41 Nb Niobium 92.906	42 Mo Molybdenum 95.95	43 Tc Technetium (98)	44 Ru Ruthenium 101.07	45 Rh Rhodium 102.91	46 Pd Palladium 106.42	47 Ag Silver 107.87	48 Cd Cadmium 112.41	49 In Indium 114.82	50 Sn Tin 118.71	51 Sb Antimony 121.76	52 Te Tellurium 127.60	53 I Iodine 126.90	54 Xe Xenon 131.29	
55 Cs Caesium 132.91	56 Ba Barium 137.33	57–71		72 Hf Hafnium 178.49	73 Ta Tantalum 180.95	74 W Tungsten 183.84	75 Re Rhenium 186.21	76 Os Osmium 190.23	77 Ir Iridium 192.22	78 Pt Platinum 195.08	79 Au Gold 196.97	80 Hg Mercury 200.59	81 Tl Thallium 204.38	82 Pb Lead 207.2	83 Bi Bismuth 208.98	84 Po Polonium (209)	85 At Astatine (210)	86 Rn Radon (222)
87 Fr Francium (223)	88 Ra Radium (226)	89–103		104 Rf Rutherfordium (261)	105 Db Dubnium (268)	106 Sg Seaborgium (269)	107 Bh Bohrium (270)	108 Hs Hassium (271)	109 Mt Meitnerium (272)	110 Ds Darmstadtium (281)	111 Rg Roentgenium (282)	112 Cn Copernicium (285)	113 Nh Nihonium (286)	114 Fl Flerovium (289)	115 Mc Moscovium (290)	116 Lv Livermorium (293)	117 Ts Tennessine (294)	118 Og Oganesson (294)

For elements with no stable isotopes, the mass number of the isotope with the longest half-life is in parentheses.

Ptable

com

57 La Lanthanum 138.91	58 Ce Cerium 140.12	59 Pr Praseodymium 140.91	60 Nd Neodymium 144.24	61 Pm Promethium (145)	62 Sm Samarium 150.36	63 Eu Europium 151.96	64 Gd Gadolinium 157.25	65 Tb Terbium 158.93	66 Dy Dysprosium 162.50	67 Ho Holmium 164.93	68 Er Erbium 167.26	69 Tm Thulium 168.93	70 Yb Ytterbium 173.05	71 Lu Lutetium 174.97
89 Ac Actinium (227)	90 Th Thorium 232.04	91 Pa Protactinium 231.04	92 U Uranium 238.03	93 Np Neptunium (237)	94 Pu Plutonium (244)	95 Am Americium (243)	96 Cm Curium (247)	97 Bk Berkelium (247)	98 Cf Californium (251)	99 Es Einsteinium (252)	100 Fm Fermium (257)	101 Md Mendelevium (258)	102 No Nobelium (259)	103 Lr Lawrencium (260)