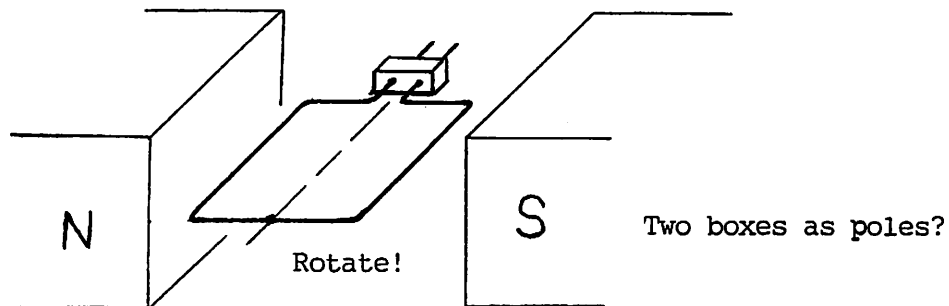
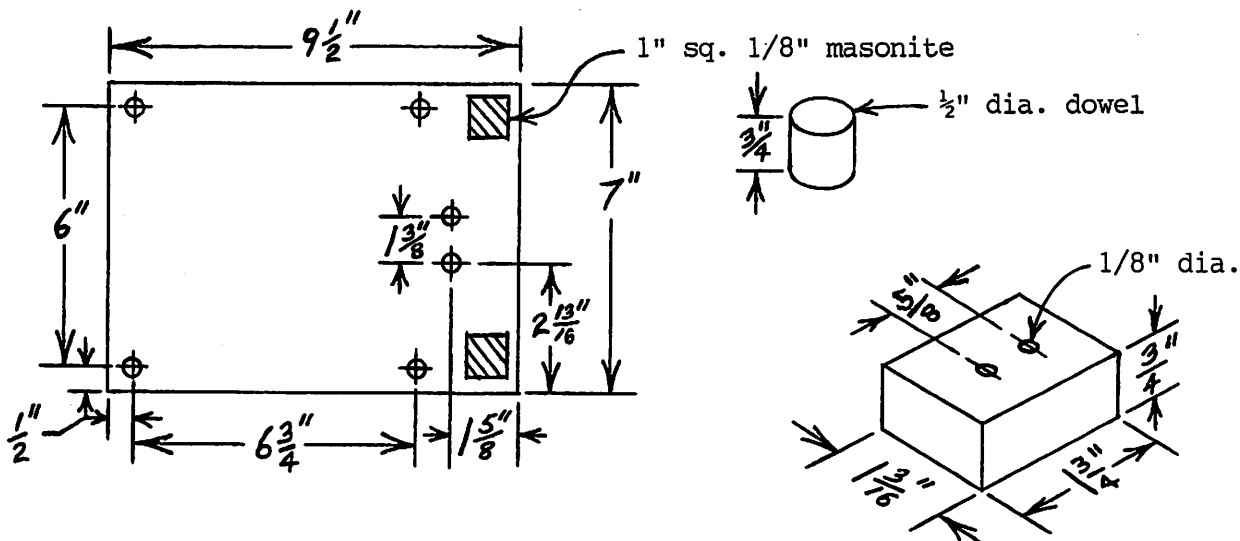


Wire Loop II - The generator or motor loop - a teaching model (and the necessary jig).



Materials 3/4" plywood, 1/2" dia. dowel, Elmer's glue, aluminum ground wire (Radio Shack #15-035) - 30 3/8" straight, wire cutters, hammer, meter stick (English scale), pencil, kleenex, #120 sandpaper, 31/64" or 1/2" drill bit, 2 1" x 1" pieces of 1/8" masonite for corners to be clamped, 2 C-clamps (3"?), 3/4" clear pine, 1/8" drill bit

Plan for jig:



- Uses: (a) the 3-D "picture" of a generator or a motor, especially the "planes" of orientation between the stationary magnetic field B and the rotating loop (armature)
- (b) to help explain the left and right hand rules of generators and motors in a 3-D "picture"